

ABOUT ENDURANCE MINING

*An emerging, silver focused,
mid-tier, multi asset metals
miner renowned for endurance*

Endurance Mining is an Australian resources company focused on industrial and precious metals.

Endurance operates its 100% owned Abra Operation located in the Gascoyne region of Western Australia, the state's largest and one of Australia's biggest silver and lead operations.

Endurance is advancing a portfolio of regional exploration projects targeting Silver, Copper, Gold and Lead.

DIRECTORS

Mr Craig McGown

NON-EXECUTIVE CHAIRMAN

Mr Matthew Hine

MANAGING DIRECTOR & CEO

Mr Richard Clayton

NON-EXECUTIVE DIRECTOR

Mr Adam Beamond

NON-EXECUTIVE DIRECTOR

COMPANY DETAILS

Endurance Mining Pty Ltd

ABN 73 686 341 471

08 6183 3200

admin@endurancemining.com.au

Level 3, 16 Ventnor Ave,
West Perth 6005

www.endurancemining.com.au

Material Uplift in Abra Mineral Resource Estimate

Endurance Mining Pty Limited ("Endurance" or the "Company") is pleased to report an updated JORC Mineral Resource Estimate ("MRE" or "2026 MRE") for its Abra Operation ("Abra" or the "Project") following an extensive 45,500m accelerated grade control and resource definition drilling programme that was completed in late 2025.

HIGHLIGHTS

- Updated 2026 JORC MRE of:
 - 31.1Mt grading 7.2% lead and 18.5g/t silver for 2.2Mt of contained lead and 18.5Moz of contained silver.
- Resource independently reviewed and endorsed by Entech Pty Ltd.
- Compared to the November 2024 MRE completed by Entech, the 2026 MRE delivered:
 - 17% increase in total Resource tonnes to 31.1Mt, including a 35% increase in Measured and Indicated Resources to 17.6Mt.
 - 14% increase in silver grade to 18.5g/t and 33% increase in contained silver metal to 18.5Moz.
 - 4% increase in lead grade to 7.2% and 21% increase in contained lead metal to 2.2Mt.
- Excellent 12 month moving average (12mma) reconciliation:
 - Declared Ore Mined (DOM) against the Mineral Resource Estimate achieved 105% ore tonnes, 102% lead grade, 114% silver grade.
 - Reconciliation achieved across a robust 1.5 million tonnes of ore mined from more than 40 stopes.
- Resource Definition and Grade Control drilling outside the 2026 MRE cutoff continues to deliver strong intercepts and growth potential including (measured as apparent widths):
 - AUD1101 – 10.4m at 100.4g/t Ag and 47.0% Pb from 47.0m.
 - AUD1078 – 14.0m at 44.8g/t Ag and 8.8% Pb from 88.3m
 - AUD1079 – 6.0m at 46.1g/t Ag and 4.8% Pb from 85.5m
 - AUD1079 – 10.3m at 50.6g/t Ag and 14.9% Pb from 99.4m
 - AUD1130 – 10.0m at 18.9g/t Ag and 12.2% Pb from 119.0m
 - AUD1065 – 12.3m at 56.8g/t Ag and 15.3% Pb from 36.9m
 - AUD1072 – 10.1m at 43.1g/t Ag and 15.1% Pb from 10.1m
 - AUD1114 – 19.7m at 13.4g/t Ag and 10.6% Pb from 23.7m
 - AUD1115 – 47.1m at 11.5g/t Ag and 12.4% Pb from 35.0m
 - AUD1130 – 10.0m at 18.9g/t Ag and 12.2% Pb from 119.0m
 - AUD1068 – 8.2m at 59.6g/t Ag and 15.4% Pb from 31.4m.

Matthew Hine, Endurance Mining’s Chief Executive Officer and Managing Director commented:

“The 2026 Mineral Resource Estimate, which has been independently reviewed by Entech, continues to bolster our confidence in Abra’s large, high-quality Resource base.

“Our decision to invest heavily in an extensive underground drill programme has delivered excellent results, increasing both tonnage and grade, as well as upgrading Resource classification.

“Importantly, Abra’s mineralisation remains open along strike and at depth. Our attention is turning towards extensional opportunities, with drilling and geophysics programmes underway.

“This complements our recently recommenced regional exploration programme, which has identified high potential satellite targets. Early results from Manganese Range delivered multiple intercepts close to surface and within trucking distance of the Abra Processing Plant.

“Endurance is aggressively pursuing its strategy to emerge as a silver-focused, mid-tier, multi-asset producer.”



Figure 1 - Endurance Geology Team in Abra Coreyard

Endurance Mining is pleased to report an updated Mineral Resource Estimate for the Abra Silver-Lead Mine in Western Australia, independently verified by Entech Pty Ltd. The update is based on an 45,500m accelerated grade control and Resource definition drill programme that was completed in 2025 and significantly improves the Company's confidence in the Abra orebody, delivering a 35% uplift in the Measured and Indicated category to 17.6 million tonnes.

The increase in orebody confidence is accompanied by an uplift in grades, including a 14% increase in Ag grade to 18.5g/t resulting in a 33% increase in contained silver metal to 18.5Moz, and a 4% increase in Pb grade to 7.2% resulting in a 21% increase in contained lead metal to 2.2Mt.

Table 1 - 2026 Updated JORC Mineral Resource Estimate for Abra Project

JORC Resource Category	Tonnes (Mt)	Lead (%)	Silver (g/t)	Lead Metal (Kt)	Silver Metal (Moz)
Measured	7.3	7.8	29.8	600	7.0
Indicated	10.4	6.9	14.7	700	4.9
Inferred	13.5	7.0	15.3	900	6.6
Total	31.1	7.2	18.5	2,200	18.5

Endurance Mining acknowledges the review and endorsement of the 2026 Mineral Resource Estimate completed by Entech Pty Ltd on the Abra Project to JORC (2012) standards.

Note: Estimated using the ordinary kriging method and reported at a 5.0% lead cut-off grade. Tonnages are rounded to the nearest 100,000t, lead grades and silver grades to one decimal place. Quantities may not total correctly due to rounding.

The quantities and grades reported above pertaining to the 2026 Abra Mineral Resource Estimate are based on information and data compiled by Mr David Allmark who is a Member of the Australasian Institute of Mining and Metallurgy and has sufficient experience which is relevant to the style of mineralisation and type of deposit under consideration and to the activity which he has undertaken to qualify as a Competent Person as defined in the 2012 edition of the Australasian Code for Reporting of Exploration Results, Mineral Resources and Ore Reserves (JORC Code). Mr Allmark is a full-time employee of Endurance Mining Pty Ltd and consents to the inclusion in this report of the matters based on his information in the form and context in which it appears.

The quantities and grades reported above pertaining to the exploration results disclosed are based on information and data compiled by Mr Jason Gotte who is a Member of the Australasian Institute of Mining and Metallurgy and has sufficient experience which is relevant to the style of mineralisation and type of deposit under consideration and to the activity which he has undertaken to qualify as a Competent Person as defined in the 2012 edition of the Australasian Code for Reporting of Exploration Results, Mineral Resources and Ore Reserves (JORC Code). Mr Gotte is a full-time employee of Endurance Mining Pty Ltd and consents to the inclusion in this report of the matters based on his information in the form and context in which it appears.

Resource classification parameters are based on a quantitative and qualitative approach, including distance to samples, number of drill holes and samples, slope of regression, presence of underground development and geological continuity within the Apron and Core lodes.

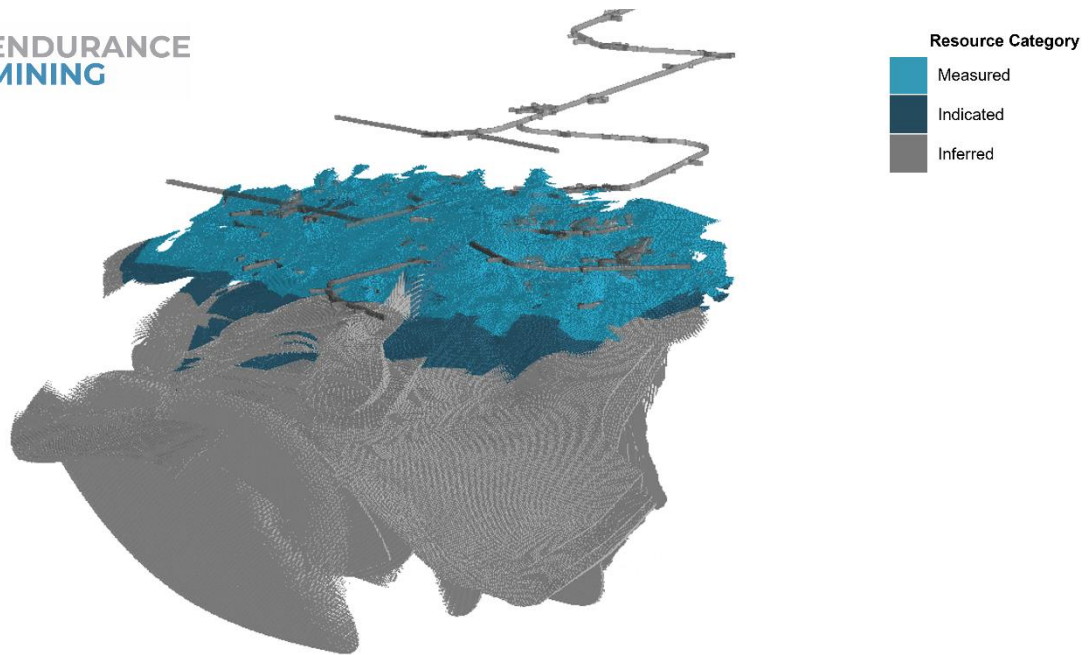


Figure 2 - Abra Orebody Northwest Perspective

Measured Resources were classified within grade control drill areas with less than 20m spacing and proximal to underground development for both the Apron and Core lodes. Previously modelled E-W veins of the Core lodes are now confirmed to be in a NW-SE orientation, which was supported by additional drilling, mapping and geological continuity between levels.

Table 2 - Abra Resource Growth from November 2024 completed by Entech to January 2026 completed by Endurance Mining

Lode	Resource Category	2026 Endurance MRE					Nov. 2024 Entech MRE				
		Quantity (Mt)	Pb (%)	Ag (g/t)	Pb Metal (Kt)	Ag Metal (Moz)	Quantity (Mt)	Pb (%)	Ag (g/t)	Pb Metal (Kt)	Ag Metal (Moz)
Apron	Measured	6.5	7.8	31.6	510	6.6	-	-	-	-	-
Apron	Indicated	5.0	7.2	17.7	358	2.8	6.7	7.1	20.4	479	4.4
Apron	Inferred	5.9	7.2	18.1	419	3.4	10.1	6.8	17.5	691	5.7
Apron	Sub total	17.4	7.4	23.0	1,285	12.9	16.9	6.9	18.6	1,170	10.1
Core	Measured	0.8	7.5	13.8	57	0.3	-	-	-	-	-
Core	Indicated	5.4	6.7	11.8	359	2.0	6.3	6.8	11.8	428	2.4
Core	Inferred	7.6	6.9	13.1	527	3.2	3.5	7.0	12.5	245	1.4
Core	Sub total	13.8	6.9	12.6	943	5.6	9.8	6.9	12.0	673	3.8
Apron & Core	Total	31.1	7.2	18.5	2,228	18.5	26.7	6.9	16.2	1,843	13.9

The 2026 MRE Update added an additional 7.3Mt of Measured material to the Abra orebody over the November 2024 Entech MRE. This underpinned a 35% increase in the Measured and Indicated categories to 17.6Mt, reflecting increased geological confidence following the 45,500m drill programme (see Table 2). Overall, the update delivered a 17% increase in total Resource tonnes (Measured, Indicated and Inferred) to 31.1Mt.

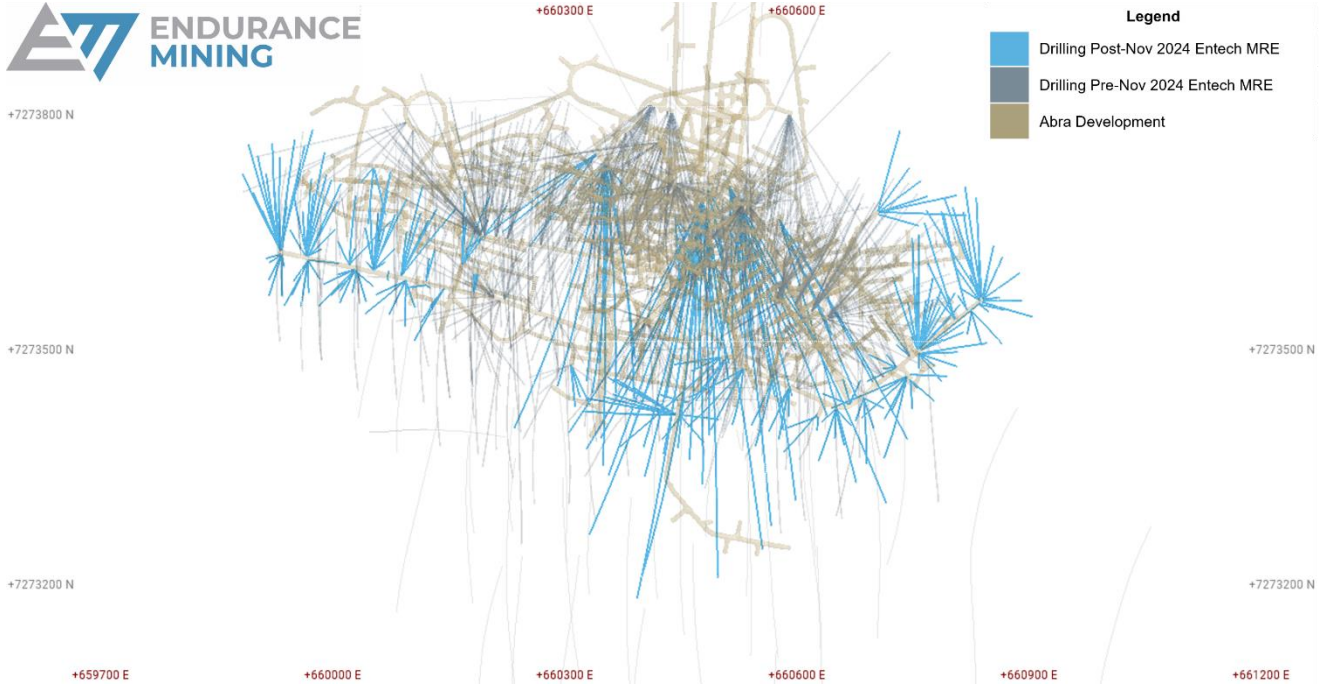


Figure 3 - Plan view of 45,500m drill programme completed since November 2024 Entech MRE

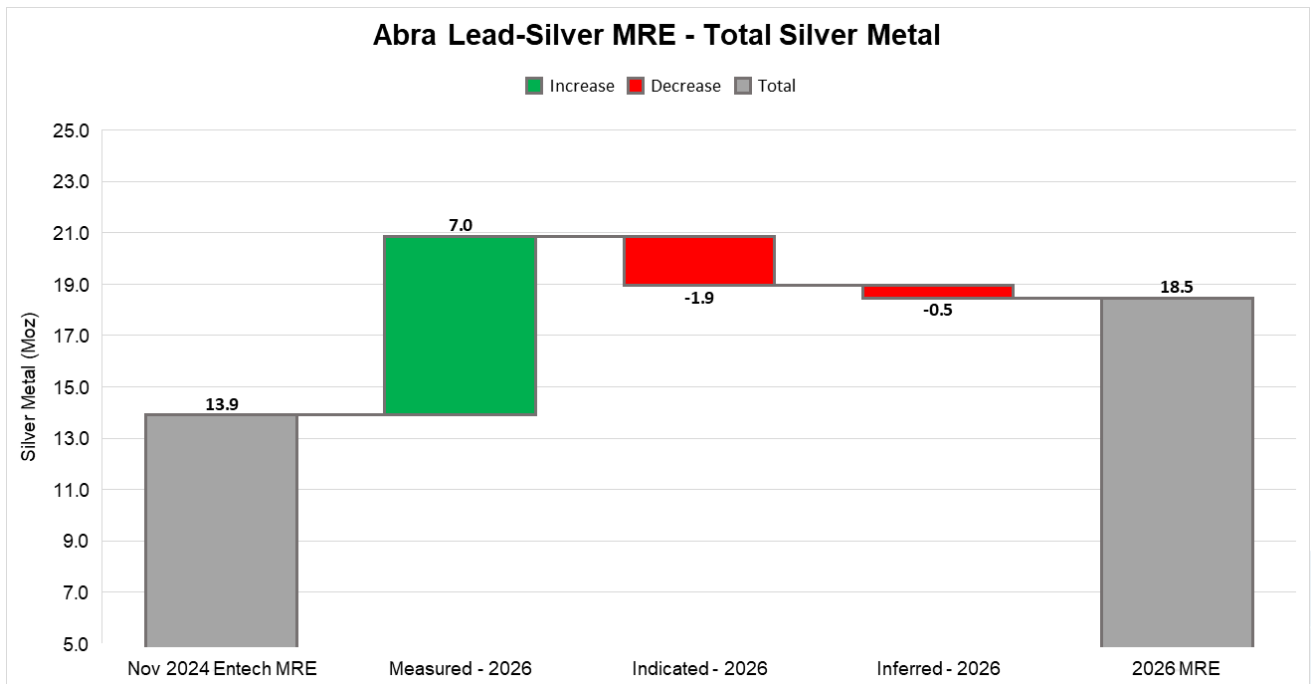


Figure 4 - Total Ag Metal Changes from November 2024 completed by Entech to January 2026 completed by Endurance Mining

The MRE Update delivered an additional 4.5Moz of silver. This was driven by a 14% uplift in silver grades to 18.5g/t Ag, resulting in a 33% increase in contained silver metal to 18.5Moz (see Figure 4).

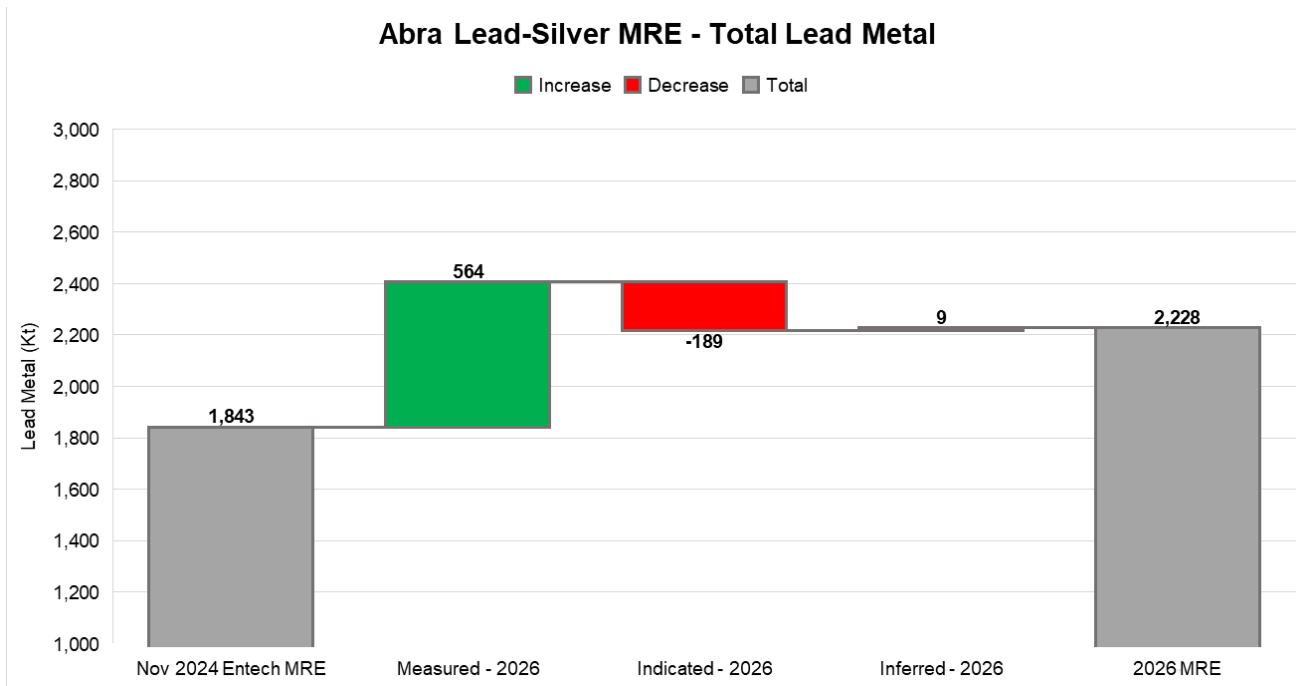


Figure 5 - Total Pb Metal Changes from November 2024 completed by Entech to January 2026 completed by Endurance Mining

Lead grades increased by 4% to 7.2% resulting in a 21% increase in contained lead metal to 2.2Mt (see Figure 5).

Drilling techniques

Drilling was by diamond-drilling methods, from both surface and underground with RC pre-collars used for some surface drill holes through the barren upper sequence rocks. Most surface holes were diamond-drilled from surface using HQ-diameter equipment and reduced to NQ-diameter at between 80m and 200m down-hole. RC pre-collars were cased and diamond-tailed using NQ-diameter equipment.

Surface diamond drilling was typically by wireline methods using standard inner tubes, with holes ranging from 600m to 700m in depth; the deepest drillhole being 955m deep. Surface drillholes were generally drilled either to grid north or south, perpendicular to the east-west striking stratigraphy and mineralisation with an average inclination around -70°.

All holes since 2022 have been drilled from underground by Swick Mining Services Ltd from dedicated drill drives and underground stockpiles/platforms. All holes have been completed using NQ2-diameter equipment using a combination of wireline and conventional drilling techniques. Underground drillholes ranged in length from 9m to 513m with an average of 163m.

Drillhole collars were surveyed using a Differential Global Positioning System (DGPS) for surface drillholes and a multi-station theodolite for underground drillholes. Historical surface drillholes until 2007 were surveyed down-hole using Eastman single shot cameras, and all drillholes from 2007 to 2022 have been surveyed down-hole using a north-seeking gyroscope instrument. Surveys for holes since 2022 have used continuous gyroscope surveying to the end of hole.

Historical drilling

The Abra deposit has been historically operated by eight entities since 1976, prior to Endurance (2025). The deposit was surface drilled on a wide-spacing then gradually infilled, prior to underground drilling commencing in 2022. The interpretation of mineralisation and geological understanding of the deposit has continuously evolved, with similar industry-standard methods being used at the time. Most of the drilling prior to 2017 has been supported by additional recent drilling with all areas of Measured and Indicated Resources in the 2026 Mineral Resource Estimate supported by recent drilling.

Sampling and sub-sampling techniques

Qualitative logging for lithology, stratigraphy, texture, veining, alteration, RQD and structures/defects was conducted using defined logging codes, with sample intervals then marked up by the logging geologist and sampled to lithological boundaries.

Endurance sampling was generally at 1.0m intervals, ranging from approximately 0.2m to 3.0m, in order to better define and understand the high-grade mineralisation. A cut line was drawn on the core to obtain the most representative sample based on the dip of mineralised structures. The majority of core was half-core sampled, then cut using an electric diamond saw on the pre-marked cut line with the right-hand side sent for assay. A “cut sheet” was generated for each drillhole documenting the sample intervals and the location of reference/QAQC samples.

The core was sampled into pre-numbered calico bags and bagged into green plastic bags which were then placed into polywoven bulka-bags for shipment to Perth for analysis. Core recovery was generally excellent due to the highly competent nature of host rock and mineralised lithologies, typically around 100%.

Historical sampling

Historic drillholes were typically sampled at 2.0m intervals, ranging from 0.4m to 3.0m, with methods assumed to be in line with industry standards at the time. As discussed, most of the drilling prior to 2017 has been supported by additional recent drilling with all areas of Measured and Indicated Resources in the 2026 Mineral Resource Estimate supported by recent drilling.

Sample analysis method

Since 2017, samples have been analysed using a four-acid digestion with an Inductively Coupled Plasma (ICP) instrument finish or a fused lithium borate flux with an X-Ray Fluorescence (XRF) finish, dependent on the element. Gold was always assayed using a Fire Assay (FA) method with an Atomic Absorption Spectrometer (AAS) finish. Samples were analysed at the Perth laboratories of either SGS, ALS, Bureau Veritas, or Intertek.

All samples were dried at around 105°C for one to two days then crushed and pulverised, often to 90% passing a 75 micron sieve. Often lead, copper, barium, iron and zinc were analysed by XRF following fusion with a lithium borate flux, with silver analysed by a four-acid digest/ICP method.

Barren flushes were inserted after every sample from 2017 until August/September 2025 when a review of sampling procedures was conducted and they were removed, then being inserted only after high-grade lead mineralisation zones.

Historical analysis

A total of five assay laboratories have been used to assay samples prior to 2017, using several different analytical techniques with different detection limits; SGS Analabs (Welshpool), Comlabs (Perth), Genalysis Laboratory Services (Maddington), ALS Chemex (Perth) and Ultratrace.

Sample preparation typically involved oven drying samples at 105-110°C, crushing to either -2mm or -3mm size fraction and pulverisation to 90% passing 75 micron. Analysis was generally by a three-acid digest with an AAS finish for base metals. Silver and gold were analysed by FA using a 30g or 100g charge. These methods were in line with industry standards at the time.

Geology and geological interpretation

The Abra Deposit is hosted in siliciclastic metasedimentary rocks of the Kiangi Creek and Irregularly Formations within the Mesoproterozoic Edmund Group, part of the Bangemall Supergroup. Lead-silver mineralisation in the Abra deposit occurs as two distinct domains; the upper stratiform, flat-lying lodes known as the Apron Zone which overlie the sub-vertical veins and breccias known as the Core Zone.

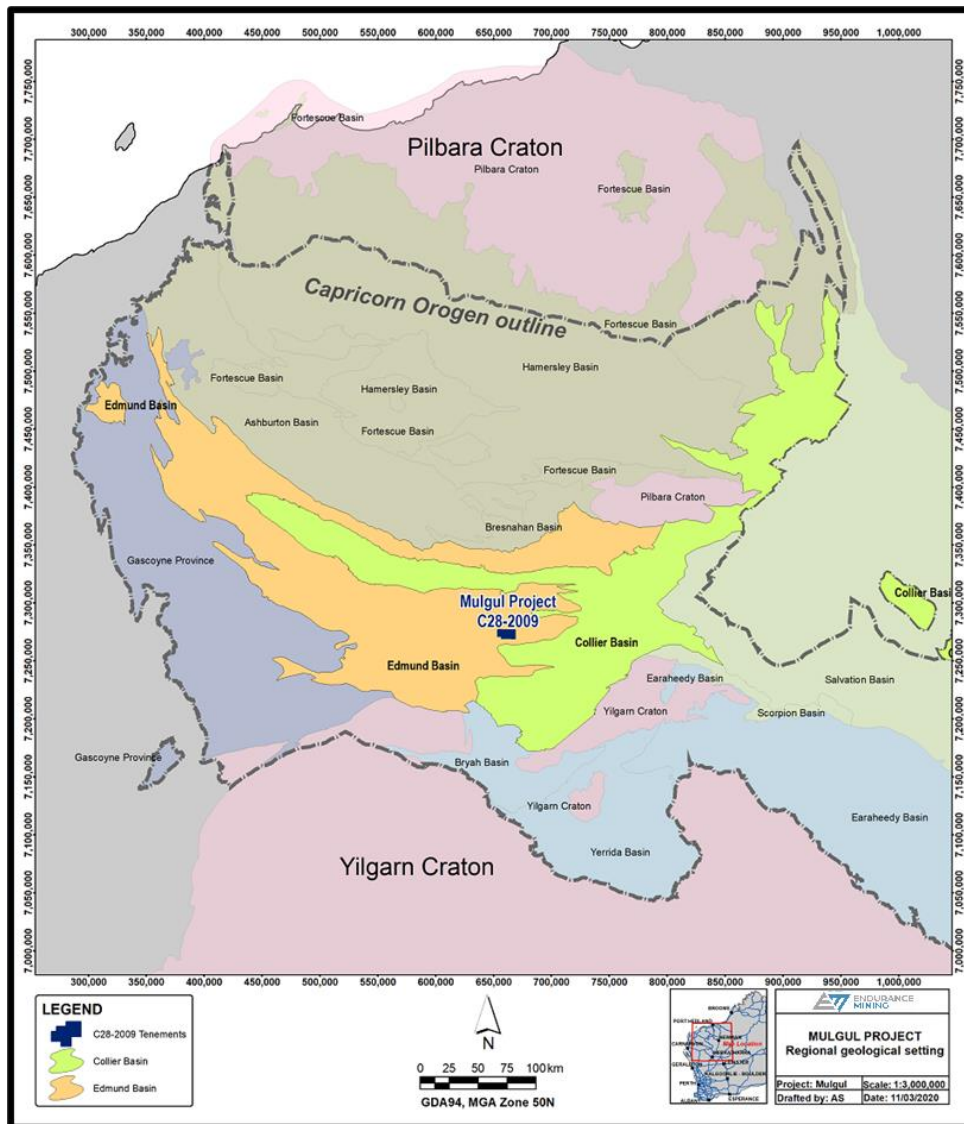


Figure 6 - Abra Project Basin Regional Geological Setting

The upper part of the Apron Zone is hosted by the Kiangi Creek Lower Conglomerate (KCLC - polymictic conglomerate and sandstone) while the lower parts of the Apron Zone are hosted by the Upper Irregularly Dolomitic Unit (UID), comprised predominantly of silica and sericite-altered mudstone (micrite) and minor lenses of conglomerate and sandstone. The Core zone is hosted by the Irregularly Chloritic Sediment Unit (ICS) comprised of chlorite and silica-altered fine-grained sediments, and the Irregularly Fine Sediment Unit (IFSU) composed of well-laminated siltstones and shales with fine dolomitic layers.

The Deposit appears to have been extensively altered, forming “rock groups” (lithology combined with alteration) which host the different styles of mineralisation in the deposit. Thirteen rock groups have been described, the key ones being the Red Zone Cap (ZRR Cap), Barite Zone (ZBZ), Carbonate Zone (ADB), Micrite (MIC), Black Zone (ZBB) and various hydrothermal and vein zones.

The Apron Zone consists of 14 defined lead and silver mineralised lodes which dip gently to the south by 10-20 degrees. Lead-silver mineralisation is hosted predominantly in the Barite Zone (particularly common in the upper Apron Lodes containing greater than 60% barite), the Carbonate Zone (intense manganese-rich siderite and dolomite alteration), the Micrite Zone (silica-sericite altered fine- to very fine-grained mudstone-sandstone) and the Black Zone (strong magnetite, hematite and silica alteration). The mineralisation is dominantly comprised of massive, semi-massive or disseminated galena and pyrite with sphalerite and minor chalcopyrite. The sulphides can form veins, layers, or matrix and/or clast -replacement in breccias and combinations of all the above within the rock groups.

The Core Zone consists of almost one hundred defined sub-vertical vein and/or breccia mineralisation lodes. The mineralisation consists of galena, pyrite and chalcopyrite with some sphalerite in quartz-sulphide veins and/or breccias with variable jaspilite and chlorite alteration and is hosted in the hydrothermal alteration and vein zones and the breccia chlorite zone of the ICS and the IFSU. Mineralisation appears to transition at depth from galena-dominant to chalcopyrite-dominant.

The deposit is intersected by numerous faults, however no significant displacement has been determined to have occurred along these faults.

Estimation methodology

Drillhole data has been composited to one metre down-hole, and top-cut to decrease the influence of outlier samples. The estimation has been completed in Seequent Leapfrog Edge software using Ordinary Kriging interpolation. All mineralised domains have been estimated using dynamic anisotropy, which enables the search ellipse to change dip and strike to match the undulating wireframes.

Top-cutting or grade capping has been applied to specific elements and domains to limit the influence of grade outliers in the estimate. Global top cuts were determined by applying a population disintegration technique on a domain-by-domain basis for each element using Datamine Supervisor software. In addition, grade thresholds (distance-based top cuts) were also applied to the estimation of some domains to allow the restricted influence of outlier grades.

Geostatistical analysis has been undertaken for all elements (including bulk density) and all domains where there were sufficient composite samples. A normal scores transform has been applied to the data for continuity analysis of all elements and the continuity models have been fitted using multi-structure, spherical modelling parameters. Semivariogram model parameters have been back-transformed on export for use in Seequent Leapfrog Edge.

The estimation of lead, silver, bulk density, iron, barium and zinc have been completed using Ordinary Kriging interpolation into parent blocks, such that all sub-blocks within a parent block have the same

grade. All estimations have been undertaken using a hard boundary approach where blocks within a domain are only informed by samples within the same domain, with the exception of the low-grade Apron domains for silver (AP101 to AP106). These were estimated using a partial soft boundary approach in an effort to increase the estimated silver grade. A partial soft boundary approach was used to allow some influence of samples within the internal high-grade domain (samples within 2 m of the high-grade domain boundary) to inform the estimation of the low-grade domain together with the samples in the corresponding low-grade domain.

Quantitative Kriging Neighbourhood Analysis (QKNA) was used to help optimise estimation parameters for each element and domain. A block size of 10mE by 10mN by 5mRL has been utilised for grade estimation. Domain boundaries and volumes have been represented using sub-cells of 1.25mE by 1.25mN by 0.625mRL. The sample search strategy varied by area with a primary search distance of 40m in the Apron Zone domains and 30m in the Core Zone domains. No more than four composites have been allowed to contribute to a block grade estimate from any single drillhole. Multiple search passes have been employed with increasing search radii applied for secondary and tertiary searches.

Block model grades have been validated visually, by whole of domain global comparison and by using swath plots for local validation.

Resource Classification criteria

The Mineral Resource has been classified into the Measured, Indicated and Inferred confidence categories in accordance with the JORC Code (2012). A quantitative and qualitative approach to resource classification was applied including distance to samples, number of drill holes and samples, slope of regression of the block estimate, presence of underground development and geological continuity within Apron and Core lodes. Three wireframes to constrain volumes within the block model were created using the above criteria to apply the resource classification.

The Measured Mineral Resource of the Apron and Core Zones are based on the demonstration of geological and grade continuity at close spacing of less than 20m by 20m, in both drillholes and mapped underground drives within the GC-drilled area.

The Indicated Mineral Resource in the Apron Zone is based on the demonstration of geological continuity and confidence of the thickness/extents of each domain. There is sufficient confidence in the geological and grade continuity of the six largest Apron Zone domains (AP101 to AP106) to classify the bulk of them as Indicated Mineral Resources, with drilling density generally ranging from 12m by 12m to 50m by 50m. The Indicated Mineral Resource in the Core Zone is based on the confidence in the orientation of the Core Zone veins from logging and structural measurements, and the determination of grade continuity in areas of drill spacing of approximately 40m by 40m or less. The bulk of the Indicated Mineral Resource is contained within the central and northern portions of the Apron Zone mineralisation, with minor portions in the Core Zone just below the GC-drilled area.

Inferred Mineral Resources are defined in areas of lower confidence of geological and/or grade continuity at the further extents of the Deposit and in areas of drill spacing of greater than approximately 50m by 50m for Apron Lodes and 40m by 40m for Core Lodes, primarily on the southern and eastern margins and down-dip areas of the Apron Zone and comprising most of the Core Zone.

Bulk density

The bulk density was measured using conventional water immersion techniques and a regression equation determined involving the assays of lead, barium and iron. Bulk density values calculated from the regression equation increased the dataset from 25,747 measured bulk density values to 149,483 combined bulk density measurements and regressed bulk density values. The combined bulk density values were then interpolated into the block model using Ordinary Kriging.

Mining and Depletion

The Abra January 2026 Mineral Resource has been depleted for mining to 1st December 2025, using wireframes of surveyed underground development and mined stopes.

A total of 4.2Mt at 4.2% lead and 16 g/t silver for 175kt lead and 2.1Moz silver metal representing all mined material in the deposit since mining commenced in 2022, was depleted from the model prior to reporting of the 2026 Mineral Resource.

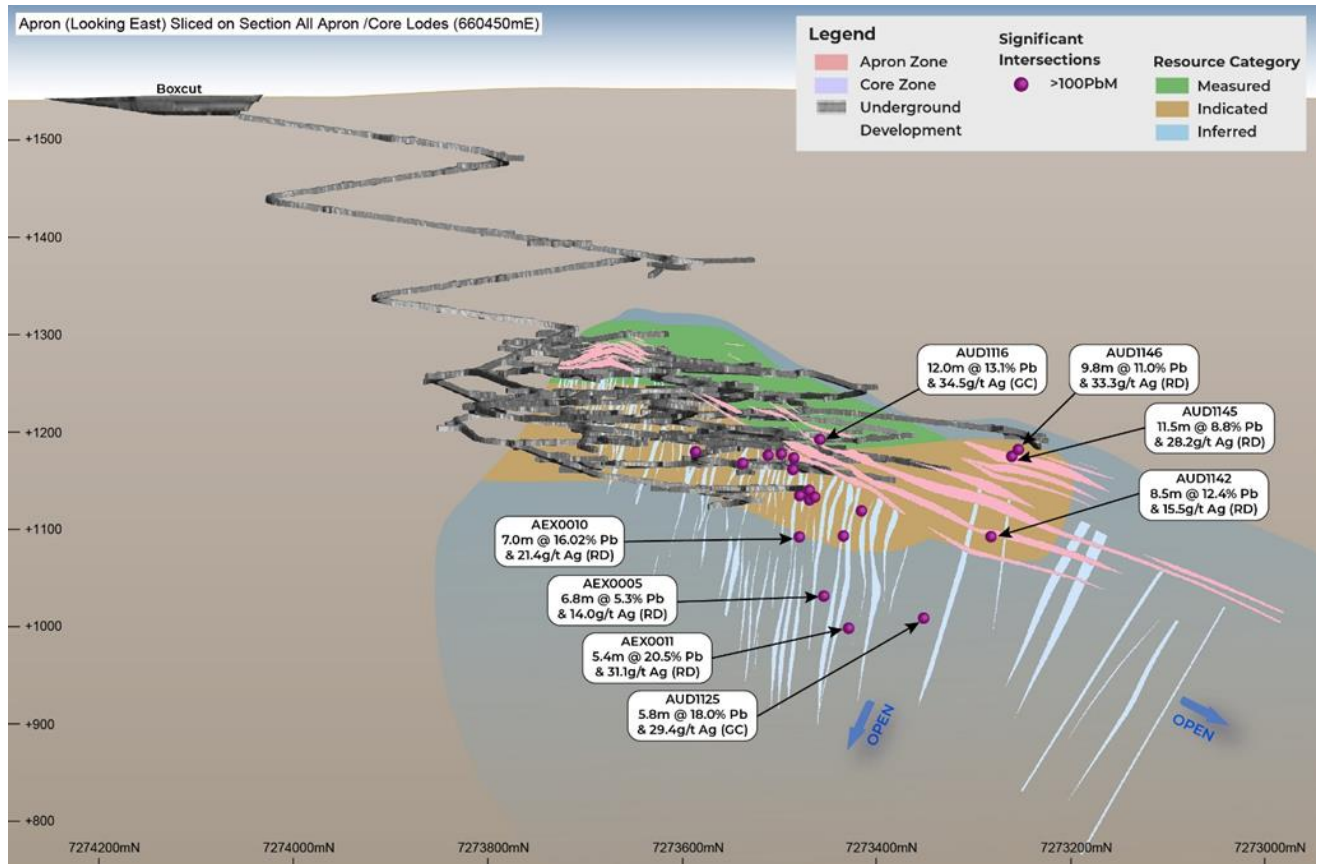
Reporting Cut-Off Grade

The Abra January 2026 Mineral Resource has been reported on a global basis at a cut-off grade of 5.0% lead depleted for mining as of 1st December 2025. The cut-off grade has been selected to be in line with previous Feasibility Study work and the previous MREs for the Project. In an assessment of reasonable prospects for eventual economic extraction, Endurance conducted a check of the suitability of the 5.0% lead reporting cut-off grade prior to reporting the Mineral Resource. An analysis was completed of the stoping break even cut-off grade (BCOG), based on FY26 budget costs, long-term average prices of USD\$2,013/t for lead and USD\$33.50/oz for silver, with recoveries of 91.5% for lead and 68.0% for silver based on real data from the Abra site processing plant and a USD/AUD foreign exchange rate of 0.65. The results indicated a BCOG of approximately 5.7% lead based on the above parameters. Sensitivities around an increase in silver price of around 100% to USD\$67/oz (close to spot prices as of February 2026) results in a BCOG of 5.3%. The reporting cut-off grade for the Mineral Resource of 5.0% is therefore suitable as it is below the BCOG and reports material with reasonable prospects for eventual economic extraction. The project is currently in operation, successfully producing a lead-silver concentrate product.

Further Resource Growth Potential

The updated Mineral Resource Estimate is based on drilling results as of September 2025. The Company has since completed a further 11,000m of Resource Definition and Grade Control drilling that has continued to deliver exceptional intercepts indicating that the Abra orebody remains open along strike and down dip.

Looking ahead, Endurance will commence an exploration programme at priority regional targets in the coming weeks. The programme will include seven holes at Manganese Range for 1,300m, eight holes at Copper Chert for 1,600m, and one Diamond Drill hole at the Coolina prospect for 400m. Assay results are expected late Q4 FY2026 and will be announced as they become available.



Disclaimer: The Resource Category is limited to Apron and Core lodes and is shown for illustrative purposes only

Figure 7 - Resource Definition and Grade Control Drilling at the Apron and Core Lodes

Highlighted intercepts from recent drilling include (measured as apparent widths):

- AEX0010 - 5.4m at 36.5g/t Ag and 11.3% Pb from 30.9m
- AEX0010 - 7.0m at 21.4g/t Ag and 16.0% Pb from 70.4m
- AEX0010 - 5.4m at 24.2g/t Ag and 9.6% Pb from 119.6m
- AEX0005 - 6.8m at 14.0g/t Ag and 5.3% Pb from 12.1m
- AEX0005 - 5.4m at 12.0% Pb and 18.9g/t Ag from 55.5m
- AEX0011- 8.4m at 29.1g/t Ag and 15.1% Pb from 178.6m.

The updated Mineral Resource Estimate provides potential to significantly extend Abra's life of mine (LOM), with updated Ore Reserves and LOM planning underway and due for release in Q4 FY2026.

This announcement was authorised for release by the Board of Directors of Endurance Mining Pty Ltd. For further information about Endurance Mining and its projects please visit the Company's website at www.endurancemining.com.au.

Investor and Media Queries

Matthew Hine

Chief Executive Officer and Managing Director

admin@endurancemining.com.au

Cooper Staines

Investor Relations

cstaines@endurancemining.com.au

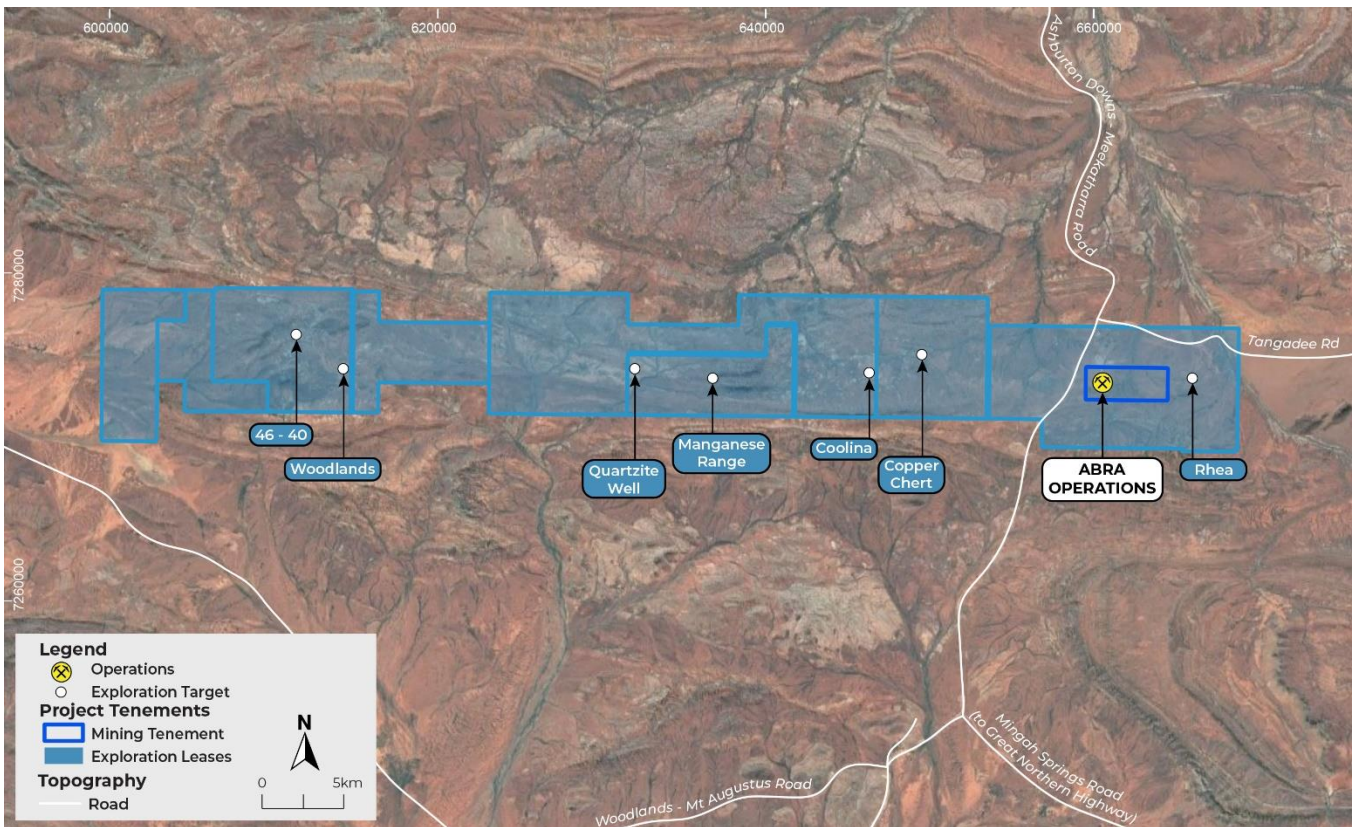


Figure 8 - Overview of Endurance Tenements



Appendix 1 - JORC TABLE 1

Section 1 Sampling Techniques and Data

Criteria	JORC Code explanation	Commentary
<i>Sampling techniques</i>	<ul style="list-style-type: none"> Nature and quality of sampling (eg cut channels, random chips, or specific specialised industry standard measurement tools appropriate to the minerals under investigation, such as down hole gamma sondes, or handheld XRF instruments, etc). These examples should not be taken as limiting the broad meaning of sampling. Include reference to measures taken to ensure sample representivity and the appropriate calibration of any measurement tools or systems used. Aspects of the determination of mineralisation that are Material to the Public Report. In cases where 'industry standard' work has been done this would be relatively simple (e.g. 'reverse circulation drilling was used to obtain 1 m samples from which 3 kg was pulverised to produce a 30 g charge for fire assay'). In other cases more explanation may be required, such as where there is coarse gold that has inherent sampling problems. Unusual commodities or mineralisation types (e.g. submarine nodules) may warrant disclosure of detailed information. 	<ul style="list-style-type: none"> The Abra January 2026 Mineral Resource Estimate ("MRE") is primarily based upon geological and assay data from diamond drilling programs completed at Abra from 1981 to date, including the extensive infill underground resource definition ("RD") and grade control ("GC") drillhole programs which are ongoing and commenced in September 2022. The Mineral Resource estimate contains 1,106 drillholes for 56,589.6 m of drilling inside the mineralised wireframes (143,774 lead samples). Sample intervals have been selected based upon geological logging and range in length from 0.2 m to 3.0 m. Galena Mining Limited ("GML"), Abra Mining Pty Limited ("AMPL") and Endurance Mining Pty Limited ("EMPL") generally sampled at 1 m sample intervals, while earlier drilling was sampled in 2 m intervals. Sampling has been applied continuously throughout the mineralised intervals with cutting lines applied to create a representative sample for the respective interval. The sampling methodology is considered to be representative and appropriate for the style of mineralisation at Abra (polymetallic lead-silver-zinc-copper-gold).
<i>Drilling techniques</i>	<ul style="list-style-type: none"> Drill type (eg, core, reverse circulation, open-hole hammer, rotary air blast, auger, Bangka, sonic, etc) and details (eg, core diameter, triple or standard tube, depth of diamond tails, face-sampling bit or other type, whether core is oriented and if so, by what method, etc). 	<ul style="list-style-type: none"> Surface drillholes utilised diamond coring methods commencing with HQ diameter (to minimise deviation) and reduced to NQ2 diameter at between 80 m and 200 m downhole depth. Several drillholes were RC pre-collared through the barren upper sequence rocks, cased and diamond-tailed using NQ2 diameter drilling. Surface diamond drilling used wireline drilling methods. Drillhole depths ranged from 320 m to 1,000 m with an average depth of 454 m. Underground ("UG") RD and GC diamond drillholes have been completed from dedicated drill drives and underground stockpiles/platforms. All drillholes have been drilled as NQ2 diameter drillholes, using a combination of wireline and conventional drilling techniques. Underground drillholes range in length from 39 m to 450 m, with an average length of 312.2 m. Most core drillholes have been oriented. Pre-GML/AMPL/EMPL drillholes were either orientated using a Chinagraph spear or Ballmark/Ezymark type systems. Galena's 2017- 2021 drilling was systematically oriented using either a Reflex ACT Mk.3TM or TrueCoreTM core orientation system. Underground RD and GC drillholes are orientated using a REFLEX ACT IIITM tool operated by Swick Mining Services during the drilling operations.
<i>Drill sample recovery</i>	<ul style="list-style-type: none"> Method of recording and assessing core and chip sample recoveries and results assessed. Measures taken to maximise 	<ul style="list-style-type: none"> All diamond core has been measured/recorded for drilling recovery by GML/AMPL/EMPL staff (and its predecessors).

	<p>sample recovery and ensure representative nature of the samples.</p> <ul style="list-style-type: none"> Whether a relationship exists between sample recovery and grade and whether sample bias may have occurred due to preferential loss/gain of fine/coarse material. 	<ul style="list-style-type: none"> Overall core recovery is excellent due to the silicified and competent nature of the core with recoveries typically approximating 100%. No grade versus recovery sample biases, due to loss or gain of material has been identified.
<i>Logging</i>	<ul style="list-style-type: none"> Whether core and chip samples have been geologically and geotechnically logged to a level of detail to support appropriate Mineral Resource estimation, mining studies and metallurgical studies. Whether logging is qualitative or quantitative in nature. Core (or costean, channel, etc) photography. he total length and percentage of the relevant intersections logged. 	<ul style="list-style-type: none"> All drill core has been logged geologically and geotechnically in detail sufficient to support the MRE, mining and metallurgical studies. Surface drillholes have been logged for lithology, texture, veining, grain size, structure, alteration, hardness, fracture density, RQD, alteration, mineralisation, and magnetic response. Underground RD and GC drillholes have been logged for lithology, texture, veining, structure, alteration, hardness, fracture density, RQD, and mineralisation. Lithological observations collected reflect both qualitative and quantitative data. All geotechnical observations and core photographs are qualitative. 100% of the diamond core has been logged and photographed wet and dry.
<i>Sub-sampling techniques and sample preparation</i>	<ul style="list-style-type: none"> If core, whether cut or sawn and whether quarter, half or all core taken. If non-core, whether riffled, tube sampled, rotary split, etc and whether sampled wet or dry. For all sample types, the nature, quality and appropriateness of the sample preparation technique. Quality control procedures adopted for all sub-sampling stages to maximise representivity of samples. Measures taken to ensure that the sampling is representative of the in-situ material collected, including for instance results for field duplicate/second-half sampling. Whether sample sizes are appropriate to the grain size of the material being sampled. 	<ul style="list-style-type: none"> All surface and underground drillholes have been routinely sampled as half-core (NQ2) for assaying, apart from two drillholes drilled in 2012, which were quarter-cored. All core has been appropriately orientated and marked-up for sampling by company geologists prior to cutting. Sample lengths range from 0.2 m to 3.0 m. AMPL/EMPL and GML's sampling has generally been completed in 1 m intervals whereas its predecessors were generally 2 m intervals. Blank samples were routinely dispatched to the laboratory to monitor sample preparation practices. These generally performed within acceptable tolerances; however, elevated lead values were returned from some blanks which is thought to either represent cross-sample contamination (i.e. soft lead caking the sample preparation bowl) or issues with the high lead values at the read stage. From drillhole AB78 onwards, barren flushes were carried out after each sample during sample preparation to reduce the risk of high-grade lead contamination between adjacent samples. Barren flushes were inserted routinely in all sample sequences until August/September 2026 when a review of sampling procedures was conducted. The review determined

		<p>that the cost of barren flushes after every sample outweighed the benefit. Going forward, barren flushes were only inserted after high-grade lead mineralisation zones.</p> <ul style="list-style-type: none"> • In GML/AMPL's 2017-2019 drill programs, coarse-crush duplicates were routinely assayed. Results showed an excellent correlation demonstrating a high level of grade repeatability. • In AMPL's 2020-2021 infill drilling program a new duplicate sample methodology was added to the QAQC system. A field duplicate sample was added, whereby the other half of the original core sample was sampled and submitted to the lab for analysis as a blind field duplicate. Most of the field duplicate samples display high to moderate levels of correlation, however, some of the samples display greater than 10% variance from the original sample, demonstrating the presence of a level of inherent grade variability within the mineralisation. • Sample sizes are typically 3kg to 6kg (depending on the length of the sample) and are considered appropriate for the fine to coarse-grained galena mineralisation present at Abra.
<p><i>Quality of assay data and laboratory tests</i></p>	<ul style="list-style-type: none"> • The nature, quality and appropriateness of the assaying and laboratory procedures used and whether the technique is considered partial or total. • For geophysical tools, spectrometers, handheld XRF instruments, etc, the parameters used in determining the analysis including instrument make and model, reading times, calibrations factors applied and their derivation, etc. • Nature of quality control procedures adopted (eg, standards, blanks, duplicates, external laboratory checks) and whether acceptable levels of accuracy (ie lack of bias) and precision have been established. 	<p><u>ASSAYING TECHNIQUES AND METHODOLOGIES:</u></p> <ul style="list-style-type: none"> • Several different laboratories and analytical techniques have been used for the assaying of Abra samples over the life of the project: <p>Amoco/Geopeko/Renison Goldfields (1981 – 1995)</p> <ul style="list-style-type: none"> • Samples were submitted to SGS Analabs Perth, Comlabs Perth, Genalysis Perth, and ALS Chemex Perth. • Sample analysis in the older drillholes was generally a three-acid digest with an AAS finish for the base metals. • Silver and gold were determined by fire assay using a 30g or 100g charge. <p>Old City/Abra Mining Limited/HNC (2005 – 2016)</p> <ul style="list-style-type: none"> • Samples were submitted to Genalysis Perth, and Ultratrace Perth for analysis. • Samples were analysed using a four-acid digest with either an AAS or ICP-OES finish. Later samples used the NaOH fusion technique for base metals followed by an ICP-OES finish. • Gold was analysed using either a 25g or 40g charge for fire assay. <p>Galena Mining (2017 to 2018)</p> <ul style="list-style-type: none"> • Samples were analysed by SGS Laboratories in Perth. An ore grade 4-acid digest was used followed by an ICP-AES finish. A selection of samples was sent for gold analysis by fire assay with an AAS finish. • From June 2018 (Drillhole AB84) samples were analysed using XRF with a platinum crucible using a lithium metaborate/tetraborate flux. • Gold was analysed by fire assay of a 50g charge with an AAS finish.

	<p>Abra Mining Pty Ltd (2019)</p> <ul style="list-style-type: none"> • Samples were analysed by SGS Laboratories in Perth, using XRF with a platinum crucible using a lithium metaborate/tetraborate flux and ore grade 4-acid digest was used for silver followed by an ICP-AES finish. A selection of samples was sent for gold analysis by fire assay with an AAS finish. <p>Abra Mining Pty Ltd (2020-2021)</p> <ul style="list-style-type: none"> • Samples were submitted to the Bureau Veritas Laboratory in Perth. • All samples were submitted for XRF analysis for 19 elements, including lead, copper, and sulphur, and also for Laser Ablation for silver, barium and 18 other elements. Gold analysis was undertaken using fire assay of a 50g charge. <p>Abra Mining Pty Ltd and Endurance Mining Pty Ltd (2022 to current – UG RD and GC Drilling)</p> <ul style="list-style-type: none"> • Samples are submitted to Intertek Perth for analysis by fused-disc XRF for lead, copper, zinc, iron, and barium (using a lithium-borate flux). • Silver is determined using four-acid digestion with an ICP-MS finish. • Reviews of the assay results by different assay methodologies have been completed, and no biases identified, except for the silver analysis. A separate study of the silver deportment and suitability of the analytical methods is currently in progress. • The analysis methods used are considered to approach total dissolution and are therefore reporting total assay values and are considered appropriate for the style and tenor of mineralisation at Abra by the Competent Person. Further work is in progress to understand the nature and associations of the silver mineralisation. <p>QAQC SYSTEMS:</p> <p>Amoco/Geopeko/Renison Goldfields (1981 – 1995)</p> <ul style="list-style-type: none"> • Geopeko Limited verified its assay data by submission of duplicate samples and cross checks by umpire laboratories. RGC submitted standards every 20 samples. <p>Old City/Abra Mining Limited/HNC/Abra Mining Limited/Galena Mining/Abra Mining Pty Ltd/Endurance Mining Pty Ltd (2005 – current)</p> <ul style="list-style-type: none"> • The majority of drillholes were either drilled by Abra Mining Limited (2005-2008), GML (2017 - 2018), AMPL (2019 – 2025) or EMPL (2025 – current) who all used industry standard QAQC programs. Blanks, certified reference standards and coarse-crush duplicates were regularly submitted to the assaying laboratory and monitored. • Both AML and GML/AMPL completed umpire pulp duplicate assaying by an alternate laboratory with results returned consistent with the primary samples.
--	---

		<ul style="list-style-type: none"> • Blind field duplicates have been added to the QAQC sample suite by AMPL in 2020. • The QAQC data indicates that assaying data accuracy and precision is of an appropriate quality for resource estimation work. • No handheld XRF or other geophysical data is reported here or used in the estimation of the Mineral Resource.
<i>Verification of sampling and assaying</i>	<ul style="list-style-type: none"> • The verification of significant intersections by either independent or alternative company personnel. • The use of twinned holes. • Documentation of primary data, data entry procedures, data verification, data storage (physical and electronic) protocols. • Discuss any adjustment to assay data. 	<ul style="list-style-type: none"> • Most historic significant intersections have been verified by (then) GML Geologists Angelo Scopel and Don Maclean while completing a core re-logging program in 2017. • Two twinned drillholes have been drilled as wedges on AB131 (AB131W1) and AB135 (AB135W1). With an average separation distance of 7 m, the intersections displayed good correlation with the lithology and mineralisation (interval locations, thickness and grade) between the twinned and original drillholes. • Prior to GML, primary geological logging and sampling data was first recorded on paper and then entered into electronic files onsite. Electronic copies were transferred periodically to the Perth head office where the master database was stored and managed. Duplicates of the data were kept onsite after validation. Duplicates of all paper copies of sample data were made for site and head office. • During GML/AMPL's 2017-2019 drilling programs geological logging and sampling data was firstly recorded on either paper or in a Toughbook computer and then entered into electronic Excel and Access database files onsite. Electronic copies were backed up onsite and routinely transferred to the Perth head office. All paper documents were scanned onsite and electronic copies kept. Duplicates of the data were copied to the Perth office after validation. Assay data was imported and merged directly from lab digital files in Excel then later uploaded into an Access Database. All data has been migrated to a Datashed™ database to ensure data integrity and security. • GML/AMPL has used LogChief™ for logging and sampling recording for all the drilling programs since 2018. Digital copies of all files are located on the site server and in Sharepoint folders, enabling access from any location. LogChief Lite has been used by EMPL since 2025 • No adjustments have been made to any assay data.
<i>Location of data points</i>	<ul style="list-style-type: none"> • Accuracy and quality of surveys used to locate drillholes (collar and down-hole surveys), trenches, mine workings and other locations used in Mineral Resource estimation. • Specification of the grid system used. 	<p><u>COLLAR SURVEYS:</u></p> <ul style="list-style-type: none"> • All surface drillhole collars have been surveyed using a DGPS by either Haines Surveys (2005), MHR Surveys (2007), Galt Mining Solutions (2017), ABIMS (2018, 2019), Land Surveys (2019), Terry Attwood Surveyor Consultant and ABIMS (2020, 2021). The

	<ul style="list-style-type: none"> Quality and adequacy of topographic control. 	<p>DGPS accuracy is within 0.02 m.</p> <ul style="list-style-type: none"> Checks of historical surface drillhole collar locations have been completed and are within error of the original collar location. The topography of the Abra area is very flat and surface drillhole collars have been cross checked against the topographic surface (accuracy within 0.1 m vertical) and no significant differences identified. Underground RD and GC drillhole collars have been surveyed by mine-site UG Surveyors using a Leica Nova MS60 multi-station theodolite with an accuracy of 0.001 m. <p><u>DOWNHOLE SURVEYS:</u></p> <ul style="list-style-type: none"> Surface drillholes have been downhole surveyed using several different methods: <p>Pre-Galena Mining (1981 – 2008)</p> <ul style="list-style-type: none"> Prior to 2008, diamond drillholes were routinely surveyed every 30 m to 50 m downhole during drilling using an Eastman Single-Shot camera. A number of these drillholes were later gyroscopically re-surveyed due to the presence of magnetite-rich rocks in some portions of the deposit which renders the Eastman azimuths inaccurate. Some inconsistencies between the Eastman single-shot and gyro data were identified in historic reviews, which was largely attributed to incorrect set-up azimuths being provided to the gyro-operators and some poor gyro QAQC controls. The pre-GML downhole survey data was reviewed, drillholes were re-surveyed where possible, and erroneous data discarded, or azimuths corrected to be consistent with neighbouring reliable surveys and re-surveyed data. Historical drillholes surveyed by previous operators (before 2017), were surveyed using Eastman single-shot (“ESS”) and/or using Electronic Multi-shot (“EMS”) downhole cameras. Due to significant amounts of magnetite within the Abra mineralisation, the ESS and EMS downhole surveys were significantly affected. A QAQC check of the previous downhole surveys in 2018 was completed using a north-seeking gyroscope to determine the variance. The new gyroscope data was applied to the historical drillholes surveyed and similar variance applied to neighbouring drillholes. Several historical drillholes were re-surveyed during the various drilling programs by Galena Mining Limited and Abra Mining Pty Limited after 2018, as part of the downhole survey QAQC process. <p>Galena Mining (2008 - 2021)</p> <ul style="list-style-type: none"> From 2008-2018 electronic multi-shot Ranger and Ezi-shot downhole tools were used for routine surveying every 30 m while drilling. These drillholes were later re-surveyed using a north-seeking gyro by contractor ABIMs and the multi-shot data replaced with gyro data in the database export. <p>Abra Mining Pty Ltd (2019 to 2021)</p> <ul style="list-style-type: none"> Surface drillholes were routinely surveyed using a
--	--	---

		<p>north-seeking Gyro every 30 m as drilling progressed.</p> <ul style="list-style-type: none"> • QAQC checks consisted of the selection of six drillholes for independent gyro re-survey. The gyro re-surveys returned results consistent with the original surveys. In addition, 13 historic pre-GML drillholes were also surveyed using the north-seeking gyro. <p>Abra Mining Pty Ltd and Endurance Mining Pty Ltd (UG RD and GC - 2022 to current)</p> <ul style="list-style-type: none"> • Underground RD and GC drillholes are surveyed using a continuous survey methodology utilizing a north-seeking REFLEX GYRO SPRINT-IGTM by the drilling contractor at the end of each drillhole. • All survey data is captured in Map Grid of Australia GDA 94, Zone 50, coordinate system. <p>UNDERGROUND OPENINGS:</p> <ul style="list-style-type: none"> • All development drives have been surveyed on a routine basis by UG Surveyors using a Leica Nova MS60 multi-station theodolite with an accuracy of 0.001 m. • All underground stopes, either in progress or complete, have been surveyed using a Teledyne Optech CMS V500 Cavity Monitoring System, with an accuracy of 0.02 m.
<p><i>Data spacing and distribution</i></p>	<ul style="list-style-type: none"> • Data spacing for reporting of Exploration Results. • Whether the data spacing and distribution is sufficient to establish the degree of geological and grade continuity appropriate for the Mineral Resource and Ore Reserve estimation procedure(s) and classifications applied. • Whether sample compositing has been applied. 	<ul style="list-style-type: none"> • The footprint of the Abra deposit extends approximately 1,200 m east-west along strike and 800 m north-south down dip of the Apron lodes. • Drillhole spacing varies from 150 m on the periphery of the deposit to 12 m in the GC-drilled portions. • The deposit lies between 230 m and 750 m below surface. • Data spacing is sufficient to establish geological and grade continuity and is considered appropriate to form the basis of a Mineral Resource Estimate. • Sample compositing was applied to drillhole data for the Mineral Resource Estimate only.
<p><i>Orientation of data in relation to geological structure</i></p>	<ul style="list-style-type: none"> • Whether the orientation of sampling achieves unbiased sampling of possible structures and the extent to which this is known, considering the deposit type. • If the relationship between the drilling orientation and the orientation of key mineralized structures is considered to have introduced a sampling bias, this should be assessed and reported if material. 	<ul style="list-style-type: none"> • The mineralisation in the Apron Zone consists of tabular, shallow, south-dipping zones which can be drilled from north or south with high intersection angles. During the underground drilling program, a fold along the northern margin of the Apron Zone Domain was identified, however this only affects the northern margin of the deposit. • A significant amount of underground diamond drillholes were added to the project database since 2022, now accounting for over 50% of the data intercepting the Abra Mineral Resource. Multiple drillhole orientations were achieved from various drilling platforms enabling a better understanding to the mineralisation lodes in the Apron Zone domain. • The Core Zone has steeply-dipping structures that trend approximately east-west and north-south and mostly dip steeply to the north. • The Apron Zone is not considered to have any sample bias issues due to the high intersection angles of all the drilling, with a primary stratiform orientation. • By virtue of its nature as a feeder zone to the Apron Zone mineralisation, the Core Zone has surface drilling at low intersection angles to the mineralised structures. Better intersection angles have been achieved with the progress of the underground

		development and addition of optimised drilling platforms.
<i>Sample security</i>	<ul style="list-style-type: none"> The measures taken to ensure sample security. 	<ul style="list-style-type: none"> All companies that drilled the deposit implemented/maintained sample security protocols. All samples were transported from site to Perth assay laboratories either by company personnel or by courier. Drill core was transported twice daily from the drill rig to the core yard at the completion of the shift. GML/AMPL/EMPL drill core has been transported to the core yard where it has been logged and sampled. Securely sealed sample bulka-bags have been transported by staff from the Abra site to Meekatharra for commercial trucking to the laboratory in Perth or trucked directly to the laboratory in Perth by GML/AMPL/EMPL transport contractors. All remaining core is stored on site.
<i>Audits or reviews</i>	<ul style="list-style-type: none"> The results of any audits or reviews of sampling techniques and data. 	<ul style="list-style-type: none"> Mark Drabble of Snowden Optiro carried out a review of the sampling, data collection processes, controls on mineralisation and geological framework during a site visit to Abra in December 2021 and found that the protocols met industry standard with no material issues identified. Mitchell River Group completed an audit of the geological database used for the estimate in February 2021. This audit included the review and documentation of sampling and geological data integrity. No issues were identified. Data validation checks are completed routinely in Leapfrog Geo and Datashed on importation of the drillhole data. No significant data entry errors have been identified. As part of a review of the 2026 MRE, Ms Jill Irvine and Mr Chris Paton of Entech Pty Ltd conducted a desktop review of the data used for the Mineral Resource. No critical flaws were identified.



Section 2 Reporting of Exploration Results

Criteria	JORC Code explanation	Commentary
<i>Exploration results</i>	<ul style="list-style-type: none"> • <i>Comment on any site visits undertaken by the Competent Person and the outcome of those visits. If no site visits have been undertaken indicate why this is the case.</i> 	<ul style="list-style-type: none"> • The Competent Person for the Reporting of Exploration Results is Mr Jason Gotte, Geology and Exploration Manager BSc (Geology/Geophysics), MAusIMM. Mr. Gotte is a permanent employee of Endurance Mining Pty Limited and has worked at the Abra Project in a site based role since May, 2025. During his time onsite, Mr. Gotte has reviewed the diamond core drilling, logging and sampling procedures, QAQC procedures, underground face, wall and backs mapping and sampling procedures and inspected underground exposures of the various mineralisation styles. He has worked closely with the site geologists reviewing and endorsing geological interpretations and modelling outputs. • The Competent Person is of the opinion that the work has been completed in line with industry best practice and to an appropriate standard suitable for the Exploration Results reported.
<i>Mineral tenement and land tenure status</i>	<ul style="list-style-type: none"> • <i>Type, reference name/number, location and ownership including agreements or material issues with third parties such as joint ventures, partnerships, overriding royalties, native title interests, historical sites, wilderness or national park and environmental settings.</i> • <i>The security of the tenure held at the time of reporting along with any known impediments to obtaining a licence to operate in the area.</i> 	<ul style="list-style-type: none"> • Endurance Mining Pty Limited ("EMPL") holds 100% interest in the Abra Project, consisting of Mining Lease M52/0776, Exploration Licence E52/1455, General Purpose Leases G52/292 and G52/286 and Miscellaneous Licences L52/021, L52/198 and L52/210. • Royalties that apply to the M52/776 and E52/1455 tenements include: 5.0% Western Australian State royalty plus 3.5% in historical, vendor and other royalty equivalent payment obligations for lead; and 2.5 % Western Australian State royalty plus 3.5% in historical, vendor and other royalty equivalent payment obligations for silver. • . • Abra is subject to an existing Indigenous Land Use Agreement and Heritage Agreement with the Jidi Jidi Aboriginal Corporation, the relevant native title claimant group. • All tenements are in good standing.
<i>Exploration done by other parties</i>	<ul style="list-style-type: none"> • <i>Acknowledgment and appraisal of exploration by other parties.</i> 	<ul style="list-style-type: none"> • Initial exploration around the Abra deposit was undertaken by Amoco Minerals Australia Company (Amoco) in 1974 but they failed to discover the Abra deposit when testing the significant magnetic anomaly associated with the mineralisation. Geopeko Limited entered into a JV with Amoco in 1980 and drilled the discovery drillhole in 1981. In total they drilled 8 diamond core drillholes (AB1-11) before being taken over by North Limited (North) which did not complete any exploration. In 1995 Renison Goldfields Corporation (RGC) Exploration joint ventured in and drilled another deep diamond core drillhole (AB22A) with a daughter drillhole wedged off it (AB22B). Both North and RGC were subject to takeovers and the tenement was relinquished in 1999. Old City Nominees Pty Ltd, a private company, then acquired the ground and subsequently vended the project into Abra Mining Limited ("AML"). • AML resumed drilling in 2005 and completed drillholes AB23-AB59. Abra Mining drilled out the main extents of the deposit and completed various drilling programs focussing on establishing a high tonnage, low grade lead resource that would be amenable to bulk underground mining. Preliminary mining, geotechnical and metallurgical studies were completed. • AML was subsequently taken over in 2011 by Chinese

		<p>company Hunan Nonferrous Metals' Australian subsidiary, HNC Resources Pty Ltd ("HNC"), following a lengthy acquisition process. Two diamond drillholes were drilled in 2012 (AB60A and AB61) HNC divested the project in 2016. GML acquired the project in 2017 and floated on the ASX.</p> <ul style="list-style-type: none"> The historic exploration work on the project is of a very high standard and the data sets generated are appropriate for use in the Mineral Resource estimate.
<p><i>Geology</i></p>	<ul style="list-style-type: none"> <i>Deposit type, geological setting and style of mineralisation.</i> 	<ul style="list-style-type: none"> The Abra deposit lies within sediments of the Proterozoic Edmund Group. Abra is a base metal replacement-style deposit hosted by sediments. The primary economic metals are lead (Pb) and silver (Ag). Copper (Cu), zinc (Zn) and gold (Au) are also present but are of much lower tenor. The deposit can be divided into two main zones. The upper Apron Zone comprises stratiform massive and disseminated lead (+/-silver) sulphides (galena) and minor copper sulphides (chalcopyrite) within a highly-altered sequence of clastic and carbonate-rich sediments. Alteration products include jaspilitic-rich sediments (Red Zone), barite alteration zone (Barite Zone) and a distinctive stratiform zone of hematite-magnetite alteration (Black Zone). In 2022, following considerable UG GC drilling, a distinct Red Zone Cap has been defined at the top of the Apron Zone, forming an impermeable barrier and trapping the mineralising fluids. No significant mineralisation occurs within the Red Zone Cap or above it. The Apron Zone extends for 1,000 m along strike, 700 m down dip, and dips gently south. It presents as a fold along the northern margin, near the Abra Fault. The Core Zone underlies the Apron Zone and comprises an elongate body of hydrothermal breccias, sub-vertical veining and intense alteration overprinting gently south-dipping sediments. The veining and breccia zones in the Core Zone represent a swarm of east-west, north-south and NW-SE striking, steeply-dipping feeder zones to the overlying Apron Zone. Hydrothermal veining dips steeply north throughout the Core Zone. High-grade lead sulphide mineralisation is predominantly hosted in intensely-veined zones. High-grade zinc sulphide mineralisation (sphalerite) is found in the Apron Zone and central portion of the Core Zone, particularly the north-south-striking veins. Copper (chalcopyrite) and gold mineralisation is sporadically found throughout the upper portions of the Core Zone but forms semi-coherent bodies of veins and breccias at the base of the Core Zone. The Core Zone extends from 300 m to 750 m below surface and can be traced for over 400 m along strike.
<p><i>Of Drillhole Information</i></p>	<ul style="list-style-type: none"> <i>A summary of all information material to the understanding of the exploration results including a tabulation of the following information for all Material drillholes:</i> <ul style="list-style-type: none"> <i>easting and northing of the drillhole collar</i> <i>elevation or RL (Reduced Level – elevation above sea level in metres) of the drillhole collar</i> <i>dip and azimuth of the hole</i> <i>down hole length and interception depth</i> <i>hole length.</i> <i>If the exclusion of this information is justified on the basis that the information is not Material and this exclusion does not</i> 	<ul style="list-style-type: none"> The Abra Mineral Resource estimate is based upon geological and assay data from diamond drilling programs completed at Abra from 1981 until September 2025 (data cutoff 19th September 2025). The Mineral Resource estimate contains 1,106 drillholes for 56,589.6 m of drilling inside the mineralised wireframes (143,774 lead samples). A complete listing of all drillhole details and drillhole intercepts used in the estimate is contained in the MRE Report and is not appropriate for this document. The MRE Report will be publically released at a later date. Exclusion of this data does not detract from the understanding of this document.

	<p><i>detract from the understanding of the report, the Competent Person should clearly explain why this is the case.</i></p>	
<p><i>Data aggregation methods</i></p>	<ul style="list-style-type: none"> <i>In reporting Exploration Results, weighting averaging techniques, maximum and/or minimum grade truncations (eg cutting of high grades) and cut-off grades are usually Material and should be stated.</i> <i>Where aggregate intercepts incorporate short lengths of high grade results and longer lengths of low grade results, the procedure used for such aggregation should be stated and some typical examples of such aggregations should be shown in detail.</i> <i>The assumptions used for any reporting of metal equivalent values should be clearly stated.</i> 	<ul style="list-style-type: none"> Results are reported on a length weighted average Results are reported where intervals are $\geq 5\text{m}$ and $\text{Ag} > 10\text{g/t}$ and $\text{Pb} > 4.5\%$ No upper cuts have been applied No metal equivalents have been used
<p><i>Relationship between mineralisation widths and intercept lengths</i></p>	<ul style="list-style-type: none"> <i>These relationships are particularly important in the reporting of Exploration Results.</i> <i>If the geometry of the mineralisation with respect to the drillhole angle is known, its nature should be reported.</i> <i>If it is not known and only the down hole lengths are reported, there should be a clear statement to this effect (eg 'down hole length, true width not known').</i> 	<ul style="list-style-type: none"> Interval widths have been reported as down hole width unless otherwise stated. The upper strata-bound mineralisation is gently dipping to the south and most drilling intercepts are typically close to true width. The lower vein-hosted mineralisation is generally steeply-dipping and drilling intercepts are greater than the true width of the mineralisation.
<p><i>Diagrams</i></p>	<ul style="list-style-type: none"> <i>Appropriate maps and sections (with scales) and tabulations of intercepts should be included for any significant discovery being reported. These should include, but not be limited to a plan view of drillhole collar locations and appropriate sectional views.</i> 	<ul style="list-style-type: none"> A plan view of the resource outline and appropriate sections and views of the resource are included within the MRE Report which will be publicly released at a later date.
<p><i>Balanced reporting</i></p>	<ul style="list-style-type: none"> <i>Where comprehensive reporting of all Exploration Results is not practicable, representative reporting of both low and high grades and/or widths should be practiced to avoid misleading reporting of Exploration Results.</i> 	<ul style="list-style-type: none"> Exploration Results for the project have been reported in the above Announcement.
<p><i>Other substantive exploration data</i></p>	<ul style="list-style-type: none"> <i>Other exploration data, if meaningful and material, should be reported including (but not limited to): geological observations; geophysical survey results; geochemical survey results; bulk samples.</i> <i>– size and method of treatment; metallurgical test results; bulk density, groundwater, geotechnical and rock characteristics; potential deleterious or contaminating substances.</i> 	<ul style="list-style-type: none"> AMPL/EMPL and its predecessors have collected a substantial volume of dry bulk density readings from drill core using standard water immersion techniques (over 25,000 readings within the MRE area). Where no dry bulk density data has been measured, the density has been regressed by comparing the combined assay results of $\text{Fe}+\text{Ba}+\text{Pb}$ to the measured dry bulk density values. The regression displays an excellent correlation of around 0.9.
<p><i>Further work</i></p>	<ul style="list-style-type: none"> <i>The nature and scale of planned further work (eg tests for lateral extensions or depth extensions or large-scale step-out drilling).</i> <i>Diagrams clearly highlighting the areas of possible extensions, including the main geological interpretations and future drilling areas, provided this information is not commercially sensitive.</i> 	<ul style="list-style-type: none"> The Mineral Resource estimate documented in the MRE report will form the basis of an updated Ore Reserve and Life of Mine Plan. The mineralisation remains open to the north (north of the Abra Fault), west, east and south. Underground drilling to the north of the Abra Fault in 2022 has identified the occurrence of mineralisation and extension to previously identified base metals

		mineralisation.
--	--	-----------------



Section 3 Estimation and Reporting of Mineral Resources

<p><i>Database integrity</i></p>	<ul style="list-style-type: none"> • <i>Measures taken to ensure that data has not been corrupted by, for example, transcription or keying errors, between its initial collection and its use for Mineral Resource estimation purposes.</i> • <i>Data validation procedures used.</i> 	<ul style="list-style-type: none"> • The Abra drilling database is stored in Datashed™ with data hosting services provided by the Mitchell River Group. • From 2018, Log Chief™ was used for logging and sampling which has in-built validation checks. • Data is validated upon import into Leapfrog Geo, with no significant issues identified.
<p><i>Site visits</i></p>	<ul style="list-style-type: none"> • <i>Comment on any site visits undertaken by the Competent Person and the outcome of those visits.</i> • <i>If no site visits have been undertaken indicate why this is the case.</i> 	<ul style="list-style-type: none"> • The Competent Person for the geological and assay data and the 2026 Mineral Resource Estimate is Mr David Allmark, BSc (Applied Geology), MAusIMM. Mr. Allmark is a permanent employee of Endurance Mining Pty Limited and has worked at the Abra Project, including regular and frequent site visits since March, 2025. During his time onsite, Mr Allmark has reviewed the diamond core drilling, logging and sampling procedures, QAQC procedures, underground face, wall and backs mapping and sampling procedures and inspected underground exposures of the various mineralisation styles. He has worked closely with the Project Mine Geologists conducting the mineralisation interpretation and modelling. • The Competent Person is of the opinion that the work has been completed in line with industry best practice and to an appropriate standard suitable for the Mineral Resource reported.
<p><i>Geological interpretation</i></p>	<ul style="list-style-type: none"> • <i>Confidence in (or conversely, the uncertainty of) the geological interpretation of the mineral deposit.</i> • <i>Nature of the data used and of any assumptions made.</i> • <i>The effect, if any, of alternative interpretations on Mineral Resource estimation.</i> • <i>The use of geology in guiding and controlling Mineral Resource estimation.</i> • <i>The factors affecting continuity both of grade and geology.</i> 	<ul style="list-style-type: none"> • The geological interpretation is based upon geological logging data from diamond drill core and underground backs, walls and face mapping for the Abra deposit. Structural data from orientated drill core and historic structural studies have also been important guides for the interpretation. • Geological/mineralisation modelling has been completed in Seequent Leapfrog Geo and Edge geological software (v2025.2.1). The deposit comprises the gently south-dipping, stratiform Apron Zone and the steep-dipping feeder hydrothermal veins and breccias of the Core Zone. • The detailed 3D lithological and structural models have been used to control the mineralisation wireframe interpretation (Abra lode model). Mineralisation has been coded into domains consistent with the host lithology. • Lead mineralisation wireframes were interpreted at a nominal cut-off grade of 3% lead. High-grade lead mineralisation zones have been identified in NW-SE trending Core veins BV003, and N-S trending Core veins CBNS001, CBNS003 and CBNS004. The zones were interpreted using an RBF interpolation method with an assay cut-off of 7% lead, determined following a cut-off grade analysis. • Silver mineralisation wireframes coincided with lead mineralisation wireframes but with the

		<p>addition of high-grade silver zones in each of the Apron lodes AP101 to AP106. High-grade silver mineralisation zones were interpreted using the same method as for the high-grade lead zones but with an assay cut-off of 30g/t silver, determined following a cut-off grade analysis.</p> <ul style="list-style-type: none"> • Wireframes were also interpreted for deleterious elements iron (Fe), zinc (Zn) and barium (Ba). Interpolation for these elements used the lead mineralisation wireframes with additional internal high-grade zones interpreted using an RBF interpolation method with various assay cut-off grades determined following cut-off grade analysis for each relevant element. • Copper and gold were estimated in previous Mineral Resources however have not been estimated in the 2026 MRE. A separate geological model for the copper and gold mineralisation is being interpreted with a separate resource to be estimated at a later date.
<p><i>Dimensions</i></p>	<ul style="list-style-type: none"> • <i>The extent and variability of the Mineral Resource expressed as length (along strike or otherwise), plan width, and depth below surface to the upper and lower limits of the Mineral Resource.</i> 	<ul style="list-style-type: none"> • The Mineral Resource Estimate encompasses all of the Abra Deposit which extends for approximately 1,100 m along strike and 800 m across-strike. The resource lies approximately 220 m to 790 m below surface.
<p><i>Estimation and modelling techniques</i></p>	<p><i>The nature and appropriateness of the estimation technique(s) applied and key assumptions, including treatment of extreme grade values, domaining, interpolation parameters and maximum distance of extrapolation from data points. If a computer assisted estimation method was chosen include a description of computer software and parameters used.</i></p> <ul style="list-style-type: none"> • <i>The availability of check estimates, previous estimates and/or mine production records and whether the Mineral Resource estimate takes appropriate account of such data.</i> • <i>The assumptions made regarding recovery of by-products.</i> • <i>Estimation of deleterious elements or other non-grade variables of economic significance (eg sulphur for acid mine drainage characterisation).</i> • <i>In the case of block model interpolation, the block size in relation to the average sample spacing and the search employed.</i> • <i>Any assumptions behind modelling of selective mining units.</i> • <i>Any assumptions about correlation between variables.</i> • <i>Description of how the geological interpretation was used to control the resource estimates.</i> • <i>Discussion of basis for using or not using grade cutting or capping.</i> 	<ul style="list-style-type: none"> • The Abra resource block model has been estimated using Seequent Leapfrog Geo and Edge (v2025.2.1) geological software. Grade estimations have been undertaken by Ordinary Kriging of top-cut one-metre downhole composites. • Grade estimations have been constrained to stratiform mineralisation (Apron Zone) and vein and breccia-hosted mineralisation (Core Zone). Areas between the Apron and Core mineralised lodes have also been estimated. • The dataset utilised in the estimation of the Mineral Resource contains only diamond drillhole data. UG face, walls and sludge samples have not been used for grade estimation but have been used to define boundaries of mineralised lodes for modelling purposes. • The block model contains estimated values for lead, silver, dry bulk density, and deleterious elements iron (Fe), zinc (Zn) and barium (Ba). • A block size of 10 mE by 10 mN by 5 mRL has been employed for grade estimation. Domain boundaries have been represented using subcells of 1.25 mE by 1.25 mN by 0.625 mRL. The block model has not been rotated. • Samples have been composited to 1 m lengths and all elements (with the exception of density) weighted by density during compositing. • Grade caps/top-cuts and grade thresholds (distance-based top-cuts) have been applied based on identifying grade outliers using a population disintegration analysis methodology

	<ul style="list-style-type: none"> • <i>The process of validation, the checking process used, the comparison of model data to drillhole data, and use of reconciliation data if available.</i> 	<p>on a domain-by-domain basis. Grade caps have been applied to only one Apron lode but around half of the Core lodes for lead. Grade thresholds for lead were also applied to only one Apron lode but more than ten Core lodes. For silver, grade caps have been applied for around half of the Apron lodes and most of the Core lodes. Grade thresholds have been applied to six of the Apron lodes, and more than ten Core lodes.</p> <ul style="list-style-type: none"> • The mineralisation and waste domains have been treated as hard boundaries during grade estimation, with the exception of the Apron lode silver estimate. A limited soft boundary was employed for the estimate of the low-grade Apron domains for silver with a range of 2m into the high grade zone applied, following a domain boundary analysis for lodes AP101 to AP106. This methodology was applied in response to underestimation of the silver grade compared to the Declared Ore Mined silver grade used for reconciliation purposes. • The sample search strategy varied by zone. The primary search distance for the first estimation pass was 40 m in the Apron Zone lodes and 30 m in the Core Zone lodes. The estimation has been undertaken using dynamic anisotropy for the search ellipse orientation within the mineralised domains. No more than four composites from any single drillhole were allowed to contribute to a block grade estimate in the first or second passes. A minimum of 10 and a maximum of 26 samples were used to inform a block in the primary search pass. • Multiple search passes have been employed with increasing search radii applied for the second and third searches. The final search pass has been designed to inform the majority of unestimated blocks within the limits of the domains. The minimum number of informing samples was decreased to 2 in the third search. • A weak correlation (R-squared value of 0.5-0.6) exists between lead and silver overall with a weak to moderate correlation in the Apron lodes only (R-squared value of 0.6-0.8). Very weak correlations exist between lead and the other elements. These correlations have not been directly utilised during grade estimation, however, the estimation search neighbourhoods and parameters applied during the estimation have remained fixed for all elements, including dry bulk density. • Dry bulk density values have been estimated within the lead domains, using the same estimation parameters as applied to the elements estimated. • Deleterious elements iron, zinc and barium were also estimated into the block model using similar estimation parameters to the estimations for lead, silver and density.
--	---	---

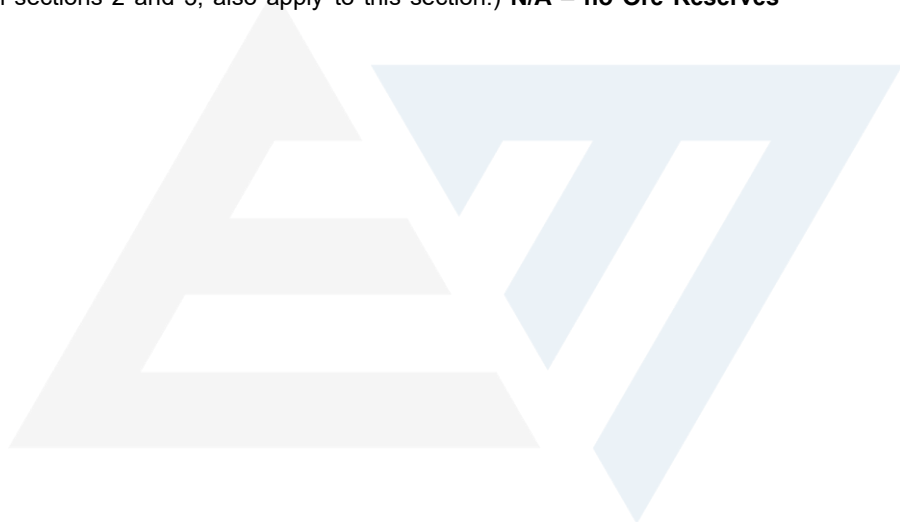
		<ul style="list-style-type: none"> Block model grades have been validated visually, by whole of domain grade comparisons and using swath plots on a domain basis, for all estimated elements. The Abra resource was previously estimated in July 2023 and then January 2025 by AMPL using Seequent Leapfrog software and Ordinary Kriged (OK) methods of grade estimation, similar to the current estimate. The current estimate was compared to both of these previous estimates for reference. Mine production records were also reconciled with the current model with results showing improvement compared to previous models. Reconciliation was conducted on a stope-by-stope basis for 3 selected stopes with results showing an increase in silver grade between 4% and 13% compared to the previous 2025 MRE, which is closer to the Declared Ore Mined silver grade from production. No assumptions have been made regarding modelling of selective mining units. Assumptions have been made regarding recovery of silver as a by-product, as there is production data from the processing plant outlining silver recoveries and grades in the final concentrate using the current flotation processing flowchart.
<i>Moisture</i>	<ul style="list-style-type: none"> <i>Whether the tonnages are estimated on a dry basis or with natural moisture, and the method of determination of the moisture content.</i> 	<ul style="list-style-type: none"> Block model estimates have been undertaken on a dry basis.
<i>Cut-off parameters</i>	<ul style="list-style-type: none"> <i>The basis of the adopted cut-off grade(s) or quality parameters applied.</i> 	<ul style="list-style-type: none"> A range of cut-off grades are reported which are believed to be appropriate for underground mining. The previous reporting cutoff grade used was 5% lead which will also be used for the 2026 MRE. The resource reporting cut-off grade is supported by an analysis of the stoping break even cut-off grade (BCOG) of 5.7% lead based on FY26 budget costs, long term average prices of USD2,013/t for lead and USD33.50/oz for Ag, recoveries of 91.5% for lead and 68% for silver based on real data from the processing plant and a USD/AUD foreign exchange rate of 0.65.
<i>Mining factors or assumptions</i>	<ul style="list-style-type: none"> <i>Assumptions made regarding possible mining methods, minimum mining dimensions and internal (or, if applicable, external) mining dilution. It is always necessary as part of the process of determining reasonable prospects for eventual economic extraction to consider potential mining methods, but the assumptions made regarding mining methods and parameters when estimating Mineral Resources may not always be rigorous. Where this is the case, this should be reported with an explanation of the basis of the mining</i> 	<ul style="list-style-type: none"> Assumptions have been made that the mining method would be the same or similar to the underground mining method currently being employed at the operation.

	assumptions made.	
<p><i>Metallurgical factors or assumptions</i></p>	<ul style="list-style-type: none"> <i>The basis for assumptions or predictions regarding metallurgical amenability. It is always necessary as part of the process of determining reasonable prospects for eventual economic extraction to consider potential metallurgical methods, but the assumptions regarding metallurgical treatment processes and parameters made when reporting Mineral Resources may not always be rigorous. Where this is the case, this should be reported with an explanation of the basis of the metallurgical assumptions made.</i> 	<ul style="list-style-type: none"> In early 2018 GML sent 130 half core samples (six composited zones) representing the major ore types at Abra for mineralogical and metallurgical test work. This work indicates that a high-quality lead-silver concentrate with an average grade of 74% lead was achievable. No major deleterious elements were identified. In 2018 and 2019 an additional 20 composites, designed to give a representative spread of ore types and early mine production, were sent for test work as part of ongoing FS study work. Comminution results indicated that AMPL should opt for a three-stage crush in combination with a ball mill. Composite mineralogy showed that a regrind to sub 40 micron would be required to liberate galena and produce a high grade concentrate. Flotation results, both batch and locked cycle tests, confirmed that a conventional flotation circuit, comprised of roughing, scavenging, regrind and two stages of cleaning, was suited. Simple flotation data modelling indicated that the plant is likely to produce a 73-75% lead concentrate grade for 93.8% lead recovery. Dewatering test work conducted on bulk concentrate and tailings confirmed that both products were amenable to conventional thickening and filtration methods. Bulk concentrate was subjected to characterisation test work for the purposes of handling and shipping. A paste fill study conducted on bulk tailings indicated that Abra tailings was amenable to use as cemented mine backfill. In 2021, thirteen composite samples were taken for metallurgical testwork, from Apron Zone mineralisation lodes AP101, AP102 and AP103, and Core Zone mineralisation from the NE area of the deposit, to determine the metallurgical test work results within a specific mining stope. A comprehensive comminution program comprised of Uniaxial Compressive Strength (UCS) tests and Drop Weight Tests was conducted as part of detailed crusher circuit design. Bond work index, Bond abrasion index and SAG mill circuit test work was also completed. During the 2022 financial year, a program of metallurgical testwork was conducted, including geomechanical studies, comprised of UCS and comminution test-work. On the completion of the geomechanical study, the samples were submitted for flotation testwork. The sample selection was driven by the geomechanical studies, therefore composite samples were selected to represent the Run Of Mine (ROM) feed for the first eight years and including a minimum of 2 m of the hangingwall and footwall dilution. The deposit is currently in production with a lead-silver concentrate being successfully produced

<p><i>Environmental factors or assumptions</i></p>	<ul style="list-style-type: none"> • <i>Assumptions made regarding possible waste and process residue disposal options. It is always necessary as part of the process of determining reasonable prospects for eventual economic extraction to consider the potential environmental impacts of the mining and processing operation. While at this stage the determination of potential environmental impacts, particularly for a Greenfields project, may not always be well advanced, the status of early consideration of these potential environmental impacts should be reported. Where these aspects have not been considered this should be reported with an explanation of the environmental assumptions made.</i> 	<p>using the flotation processing method.</p> <ul style="list-style-type: none"> • The Abra project is on a granted mining lease. • No environmental factors/issues have been identified to date. • The Abra project produces a lead-silver sulphide concentrate which is trucked to Geraldton in sealed containers and shipped in sealed bulk carriers.
<p><i>Bulk density</i></p>	<ul style="list-style-type: none"> • <i>Whether assumed or determined. If assumed, the basis for the assumptions. If determined, the method used, whether wet or dry, the frequency of the measurements, the nature, size and representativeness of the samples.</i> • <i>The bulk density for bulk material must have been measured by methods that adequately account for void spaces (vughs, porosity, etc), moisture and differences between rock and alteration zones within the deposit.</i> • <i>Discuss assumptions for bulk density estimates used in the evaluation process of the different materials.</i> 	<ul style="list-style-type: none"> • A total of 21,245 dry bulk density measurements have been collected from a suite of mineralised and un-mineralised drill core samples using conventional water immersion techniques. A total of 12,038 dry bulk density measurements have been utilised in the Mineral Resource. • The dry bulk density measurements correlate well with the sum of the lead, barium and iron grades (Pb+Ba+Fe), with bulk density increasing as the summed grade increases. This relationship has allowed an exponential regression to be determined between the combined assay data and the dry bulk density measurements, thereby enabling the calculation of regressed dry bulk density values for a number of drillhole intervals without a dry bulk density measurement. • Once the regression had been applied, the MRE dataset contained a total of 59,927 measured and regressed dry bulk density values, which were composited to two metres and used to estimate dry bulk density using ordinary kriging within the lead mineralised and waste domains. Blocks which did not estimate have been assigned the mean dry bulk density of the domain they occur within.
<p><i>Classification</i></p>	<ul style="list-style-type: none"> • <i>The basis for the classification of the Mineral Resources into varying confidence categories.</i> • <i>Whether appropriate account has been taken of all relevant factors (i.e. relative confidence in tonnage/grade estimations, reliability of input data, confidence in continuity of geology and metal values, quality, quantity and distribution of the data).</i> • <i>Whether the result appropriately reflects the Competent Person's view of the deposit.</i> 	<ul style="list-style-type: none"> • The deposit is classified as a Measured Mineral Resource, Indicated Mineral Resource and Inferred Mineral Resource. • The classification of the Measured Mineral Resource in the Apron Zone is based on the presence of close-spaced GC diamond drillholes and underground development drives which enable the detailed observation/mapping of the mineralisation and geological features. • The classification of Indicated Mineral Resources is based on the demonstration of geological and grade continuity underpinned by a high-resolution 3D geological model that has been used to constrain the mineralised domains.

		<ul style="list-style-type: none"> All other portions are classified as Inferred Mineral Resources or are unclassified. The classification takes into account the relative contributions of geological and data quality, as well as grade confidence and grade continuity. The classification reflects the view of the Competent Person.
<i>Audits or reviews</i>	<ul style="list-style-type: none"> <i>The results of any audits or reviews of Mineral Resource estimates.</i> 	<ul style="list-style-type: none"> The database coding and composite generation, geological modelling and mineralisation wireframes, block model estimation methodology, classification and depletion coding have been reviewed by Ms Jill Irvine and Mr Chris Paton of Entech Pty Ltd. The block model estimation process and outcomes have also been reviewed by Ms Jill Irvine and Mr Chris Paton of Entech Pty Ltd.
<i>Discussion of relative accuracy/confidence</i>	<ul style="list-style-type: none"> <i>Where appropriate a statement of the relative accuracy and confidence level in the Mineral Resource estimate using an approach or procedure deemed appropriate by the Competent Person. For example, the application of statistical or geostatistical procedures to quantify the relative accuracy of the resource within stated confidence limits, or, if such an approach is not deemed appropriate, a qualitative discussion of the factors that could affect the relative accuracy and confidence of the estimate.</i> <i>The statement should specify whether it relates to global or local estimates, and, if local, state the relevant tonnages, which should be relevant to technical and economic evaluation. Documentation should include assumptions made and the procedures used.</i> <i>These statements of relative accuracy and confidence of the estimate should be compared with production data, where available.</i> 	<ul style="list-style-type: none"> The relative accuracy of the Mineral Resource estimate is reflected in the reporting of the Mineral Resource as per the guidelines of the JORC (2012) Code. The statement relates to an estimate of tonnes and grade by underground mining methods at a cut-off grade of 5.0% lead.

(Criteria listed in section 1, and where relevant in sections 2 and 3, also apply to this section.) **N/A – no Ore Reserves Reported here**



Appendix 2 – List of Drillholes in MRE

HoleID	Easting (mE)	Northing (mN)	AbraMine_Elev (mRL)	Max_Depth (m)	Hole_Type
AB10	660869.887	7273021.582	1537.651	899	DDH
AB100	660321.777	7273518.142	1554.33	522.92	DDH
AB102	660620.407	7272768.631	1538.933	784	DDH
AB103	660024.314	7273559.074	1563.007	418.01	DDH
AB104	660122.699	7273545.962	1559.475	424.24	DDH
AB105	660072.105	7273629.797	1562.316	369.92	DDH
AB106	660222.176	7273679.315	1558.465	376.3	DDH
AB107	660122.932	7273426.225	1556.151	457.13	DDH
AB109	660324.169	7273621.126	1556.074	364.91	DDH
AB11	661018.364	7272894.984	1536.916	855	DDH
AB110	660072.886	7273492.362	1559.849	493.14	DDH
AB111	660125.654	7273595.593	1560.083	399.98	DDH
AB112	660282.793	7273384.176	1551.221	496.32	DDH
AB113	660224.689	7273613.991	1557.66	391.24	DDH
AB114	660323.604	7273575.39	1555.614	427.09	DDH
AB115	660199.371	7273498.86	1555.272	421.7	DDH
AB116	660274.181	7273578.125	1556.266	373.26	DDH
AB117	660270.916	7273488.581	1554.208	427	DDH
AB118A	660332.227	7273458.759	1552.541	511.3	DDH
AB119	660157.769	7273421.971	1555.194	492.94	DDH
AB12	660522.553	7273251.007	1545.114	700.3	DDH
AB120	660386.528	7273378.513	1550.752	478.03	DDH
AB121	660222.485	7273401.515	1552.974	496.16	DDH
AB122	660223.835	7273500.907	1555.658	448.13	DDH
AB123	660025.295	7273476.958	1560.634	445.26	DDH
AB124	660191.033	7273428.441	1554.4	439.4	DDH
AB125	660024.483	7273567.232	1563.357	431.74	DDH
AB126	660190.97	7273428.573	1554.414	433.28	DDH
AB127	660384.251	7273464.012	1552.664	475.14	DDH
AB128	660123	7273543.405	1559.345	420.21	DDH
AB129	660246.734	7273485.901	1554.881	445.13	DDH
AB131	660246.937	7273483.343	1554.612	442.18	DDH
AB131W1	660246.937	7273483.343	1554.612	421.09	DDH
AB132A	660074.044	7273552.578	1561.235	409.14	DDH
AB133	660074.463	7273547.617	1561.034	405.9	DDH
AB134	660294.997	7273518.751	1554.964	439.28	DDH
AB135	660294.929	7273518.581	1554.828	429	DDH
AB135W1	660294.889	7273518.577	1554.839	412.08	DDH
AB136	660220.701	7273444.953	1553.468	444.62	DDH
AB137	660174.222	7273511.834	1557.103	442.51	DDH
AB138	660220.737	7273444.355	1553.434	427.19	DDH
AB139	660174.541	7273509.699	1556.794	419.71	DDH
AB140	660073.023	7273402.356	1556.63	472.34	DDH
AB141A	660270.349	7273491.232	1554.3	447.95	DDH
AB142	660025.527	7273475.771	1560.413	456.27	DDH
AB143	660270.696	7273486.078	1554.07	414.67	DDH
AB145	659975.233	7273556.796	1564.051	409.05	DDH
AB146	660349.659	7273599.536	1555.385	374.93	DDH
AB147	660548.926	7273549.137	1552.737	391.24	DDH
AB148	660650.112	7273271.742	1543.825	510.97	DDH
AB149	660300.153	7273292.203	1549.086	514.42	DDH
AB150	660178.642	7273366.572	1552.858	468.68	DDH
AB151	659999.009	7273609.619	1564.788	393.04	DDH
AB152	660001.068	7273461.882	1560.452	427.1	DDH
AB153	660298.146	7273603.724	1556.233	381.87	DDH

HoleID	Easting (mE)	Northing (mN)	AbraMine_Elev (mRL)	Max_Depth (m)	Hole_Type
AB154	660249.946	7273635.04	1557.432	363.82	DDH
AB155	660573.67	7273530.329	1552.214	397.14	DDH
AB156	660048.686	7273554	1561.863	401.5	DDH
AB157	660376.44	7273617.708	1555.097	348.7	DDH
AB158	660548.429	7273547.388	1552.694	421.06	DDH
AB159	659975.005	7273558.906	1564.063	415.05	DDH
AB16	660519.923	7273354.997	1546.765	836	DDH
AB160	660272.531	7273257.523	1548.772	499.15	DDH
AB161	660300.64	7273546.461	1555.264	402.07	DDH
AB162	660050.09	7273605.927	1562.786	373	DDH
AB163	660272.695	7273326.086	1550.097	475.05	DDH
AB164	660374.82	7273515.602	1553.996	430	DDH
AB165	660072.484	7273437.917	1558.026	454.07	DDH
AB166	660496.409	7273582.346	1553.276	436.43	DDH
AB167	660496.347	7273583.648	1553.299	376.1	DDH
AB168W1	660087.446	7273383.726	1555.663	561	DDH
AB169	660349.647	7273599.525	1555.384	385.4	DDH
AB17	660424.154	7273451.519	1551.64	570.1	DDH
AB170	660525.478	7273537.207	1552.812	405.1	DDH
AB171	660613.809	7273487.969	1550.715	385.06	DDH
AB172	660546.223	7273623.206	1553.24	366.84	DDH
AB173	660546.015	7273442.778	1550.071	483.96	DDH
AB174	660473.712	7273587.792	1553.485	445.6	DDH
AB175	660174.116	7273576.159	1558.304	384	DDH
AB176	660597.876	7273414.505	1548.863	417.98	DDH
AB177	660473.052	7273590.391	1553.469	373.5	DDH
AB178	660251.036	7273362.23	1551.45	473.45	DDH
AB179	660450.054	7273592.813	1553.794	412.01	DDH
AB18	660572.9	7273349.6	1547.17	842.25	DDH
AB180W1	660051.66	7273683.258	1563.423	430.5	DDH
AB181	660401.205	7273598.741	1554.817	361.85	DDH
AB182	660351.736	7273435.805	1552.224	487.59	DDH
AB183A	660601.276	7273555.754	1552.12	403.81	DDH
AB184	660422.381	7273328.254	1548.464	442.5	DDH
AB185	660601.244	7273553.257	1551.988	367.09	DDH
AB186A	660123.042	7273561.272	1559.505	415.28	DDH
AB187A	660401.186	7273598.186	1554.757	368.27	DDH
AB188W1	660098.129	7273664.694	1561.58	457.73	DDH
AB189	660249.383	7273636.695	1557.509	393.91	DDH
AB19	660523.776	7273399.49	1548.388	721.55	DDH
AB190	660450.039	7273592.542	1553.572	415.1	DDH
AB191	660697.699	7273273.884	1543.665	493.24	DDH
AB192	660593.28	7273409.335	1548.75	564.3	DDH
AB193	660419.157	7273621.714	1554.524	372.92	DDH
AB194	660540.119	7273664.226	1553.597	469	DDH
AB195	660618.869	7273254.871	1544.131	1000	DDH
AB196	660323.205	7273544.045	1554.872	405.5	DDH
AB197	659998.654	7273611.669	1564.768	433.11	DDH
AB198	660419.111	7273622.616	1554.614	335.11	DDH
AB199	660525.155	7273536.509	1552.713	453.92	DDH
AB200A	660596.225	7273410.633	1548.675	492.75	DDH
AB22A	660602.165	7273724.574	1552.922	955	DDH
AB23	660462.069	7273370.052	1548.912	757.2	DDH
AB24	660569.462	7273360.887	1546.989	825.8	DDH
AB25	660345.377	7273424.799	1551.985	652.2	DDH
AB27	660701.197	7273497.011	1548.815	629.5	DDH
AB28	660350.459	7273426.154	1551.964	740.6	DDH
AB29A	660569.447	7273360.483	1547.084	636.8	DDH

HoleID	Easting (mE)	Northing (mN)	AbraMine_Elev (mRL)	Max_Depth (m)	Hole_Type
AB30	660574.433	7273176.095	1544.215	762.8	DDH
AB31	660458.979	7273171.895	1545.057	708.9	DDH
AB32	660371.194	7273176.856	1546.965	760.6	DDH
AB33	660462.194	7273373.197	1549.015	645.7	DDH
AB34	660224.948	7272949.831	1544.638	799.5	DDH
AB35	660422.168	7272960.141	1543.642	706.2	DDH
AB36	660122.567	7273154.683	1548.171	832.2	DDH
AB37	660123.217	7273359.293	1554.157	613.3	DDH
AB38	660822.218	7273295.468	1542.336	685.2	DDH
AB39	660374.353	7273730.774	1556.088	756.6	DDH
AB4	660642.806	7273349.942	1546.48	536	DDH
AB40	660527.596	7273605.058	1553.332	650.1	DDH
AB43	660524.456	7273711.444	1553.991	757.4	DDH
AB44	660475.724	7273824.896	1554.797	595.3	DDH
AB45	660474.879	7273725.729	1554.518	708.7	DDH
AB47	660575.022	7273357.648	1547.373	801.7	DDH
AB48	660524.476	7273777.915	1554.182	669.7	DDH
AB5	660365.61	7273327.665	1548.434	759.5	DDH
AB50	660574.38	7273712.717	1553.21	809.6	DDH
AB52	660724.081	7273538.262	1548.749	794.3	DDH
AB53	660525.563	7273844.186	1554.011	699.7	DDH
AB54	660573.187	7273778.99	1553.21	811	DDH
AB55	660723.484	7273441.18	1546.766	792.7	DDH
AB56	660324.564	7273588.074	1555.621	758.4	DDH
AB57	660772.187	7273438.694	1545.785	670.5	DDH
AB58	660272.685	7273635.934	1557.012	660.8	DDH
AB59	660273.75	7273534.281	1555.43	792.7	DDH
AB6	660616.005	7273634.865	1552.423	400	DDH
AB60A	660474.013	7273595.673	1553.781	640.1	DDH
AB61	660573.97	7273557.077	1552.74	632.3	DDH
AB7	660335.136	7273607.93	1555.888	459	DDH
AB70	660573.203	7273640.859	1553.555	649.28	DDH
AB71	660622.584	7273648.136	1552.553	757.15	DDH
AB72	660227.989	7273356.015	1551.64	582.92	DDH
AB73A	660378.945	7273271.918	1547.483	655.88	DDH
AB74	660222.665	7273254.731	1549.321	577.21	DDH
AB75	660324.717	7273492.338	1553.914	642.06	DDH
AB77	660574.749	7273673.525	1553.431	732.7	DDH
AB78	660522.858	7273667.975	1553.933	694	DDH
AB79	660357.856	7273078.063	1545.861	719.28	DDH
AB80	660493.844	7273125.745	1543.708	706.66	DDH
AB81	660663.46	7273225.732	1542.247	696	DDH
AB82	660273.287	7273459.936	1553.51	466.09	DDH
AB83	660274.926	7273063.302	1546.47	784.7	DDH
AB84	660273.565	7273553.856	1555.94	406.1	DDH
AB85	660221.063	7273441.674	1553.524	450.5	DDH
AB86	660220.857	7273165.636	1548.488	580.63	DDH
AB87	660720.911	7273351.752	1545.669	460.06	DDH
AB88	660615.325	7273097.073	1541.348	665.21	DDH
AB89	660423.692	7273059.656	1544.633	692.2	DDH
AB9	660671.549	7273108.04	1540.481	945.3	DDH
AB90	660269.472	7272979.869	1545.076	692.6	DDH
AB91A	660520.991	7273034.17	1543.638	664.2	DDH
AB92	660223.483	7273555.406	1556.893	435.9	DDH
AB93	660674.833	7272957.049	1541.102	720.9	DDH
AB94	660272.847	7273635.911	1557.105	399.9	DDH
AB95	660322.139	7272958.115	1544.317	714.9	DDH
AB96	660163.602	7273468.17	1556.193	476.7	DDH

HoleID	Easting (mE)	Northing (mN)	AbraMine_Elev (mRL)	Max_Depth (m)	Hole_Type
AB97	660074.775	7273548.6	1561.016	390.02	DDH
AB98	660173.136	7273638.078	1559.281	402.27	DDH
AB99	660381.039	7273371.694	1550.411	511.67	DDH
ABGT002	660431.682	7273487.693	1552.501	625.32	DDH
22AUD0001	660459.322	7273752.751	1390.691	240	DDH
22AUD0002	660459.079	7273753.18	1390.673	315	DDH
22AUD0003	660459.146	7273757.456	1390.66	220	DDH
22AUD0004	660459.1	7273753.423	1390.698	280	DDH
22AUD0005	660459.419	7273752.583	1390.487	195.06	DDH
22AUD0006	660459.469	7273752.525	1390.508	200.04	DDH
22AUD0007	660459.182	7273753.46	1390.533	190	DDH
22AUD0008	660460.266	7273750.458	1390.504	195	DDH
22AUD0009A	660479.344	7273698.398	1390.015	163	DDH
22AUD0010	660460.331	7273750.767	1390.466	160.05	DDH
22AUD0011	660460.592	7273750.726	1390.456	135	DDH
22AUD0012	660464.674	7273746.779	1390.342	190	DDH
22AUD0013	660464.534	7273746.534	1390.454	185	DDH
22AUD0014	660464.736	7273746.682	1390.328	200	DDH
22AUD0015	660479.663	7273698.318	1390.057	153	DDH
22AUD0020	660479.357	7273697.633	1390.018	154	DDH
22AUD0021	660479.488	7273697.498	1390.026	173	DDH
22AUD0022	660541.135	7273580.692	1372.415	204	DDH
22AUD0023	660541.201	7273580.7	1372.508	150	DDH
22AUD0024	660541.122	7273580.814	1372.483	167.7	DDH
22AUD0025	660541.092	7273580.846	1372.618	164	DDH
22AUD0070	660479.556	7273699.663	1389.992	155	DDH
22AUD0026	660541.334	7273580.671	1372.631	179	DDH
22AUD0060	660479.364	7273700.193	1389.99	158	DDH
22AUD0072	660478.407	7273712.055	1389.743	148	DDH
22AUD0107	660584.926	7273675.587	1370.794	139.5	DDH
22AUD0108	660584.881	7273675.887	1370.78	133.9	DDH
22AUD0139	660568.92	7273672.555	1370.789	121.7	DDH
22AUD0140	660568.997	7273672.458	1370.893	141	DDH
22AUD0080	660482.188	7273699.435	1389.985	144.1	DDH
22AUD0093	660482	7273699.219	1389.966	163.37	DDH
22AUD0133	660569.304	7273672.948	1370.846	111	DDH
22AUD0136	660570.436	7273672.853	1370.803	163.74	DDH
22AUD0126	660579.172	7273671.277	1370.802	151.3	DDH
22AUD0134	660570.226	7273672.867	1370.865	142	DDH
22AUD0144	660569.207	7273672.52	1370.971	203.4	DDH
22AUD0145	660579.116	7273671.279	1370.792	176.4	DDH
22AUD0148	660579.01	7273671.306	1370.824	212.6	DDH
22AUD0094	660482.503	7273699.436	1389.923	164.38	DDH
22AUD0129	660569.072	7273673.969	1370.745	118.5	DDH
22AUD0131	660569.594	7273673.828	1370.744	108.1	DDH
22AUD0138	660569.086	7273673.932	1370.73	150.14	DDH
22AUD0141	660569.084	7273672.542	1370.867	137	DDH
22AUD0154	660569.193	7273672.427	1371.294	155.7	DDH
22AUD0079	660484.23	7273698.855	1389.96	142.8	DDH
22AUD0083	660484.281	7273698.289	1390.544	145.46	DDH
22AUD0086	660482.266	7273699.182	1389.997	147.36	DDH
22AUD0087	660484.618	7273698.073	1389.986	147.3	DDH
22AUD0092	660484.525	7273698.022	1390.148	158.98	DDH
22AUD0096	660483.74	7273697.757	1390.019	166.96	DDH
22AUD0098	660483.968	7273697.751	1389.983	174.4	DDH
22AUD0100	660484.568	7273697.672	1390.002	185.7	DDH
22AUD0109	660584.551	7273675.608	1370.89	127.78	DDH
22AUD0153	660569.009	7273672.494	1371.277	175.86	DDH

HoleID	Easting (mE)	Northing (mN)	AbraMine_Elev (mRL)	Max_Depth (m)	Hole_Type
22AUD0156	660568.883	7273672.403	1370.836	161.9	DDH
22AUD0110	660581.73	7273676.725	1370.825	125.6	DDH
22AUD0111	660581.266	7273676.911	1370.706	116.7	DDH
22AUD0112	660581.493	7273676.633	1370.773	122.5	DDH
22AUD0116	660570.49	7273677.661	1370.722	113.9	DDH
22AUD0118	660569.702	7273677.553	1370.592	120.27	DDH
22AUD0119	660569.945	7273677.751	1370.596	121.6	DDH
22AUD0165	660555.68	7273715.893	1292.483	54.04	DDH
22AUD0091	660484.696	7273701.528	1389.89	153.75	DDH
22AUD0081	660484.22	7273701.571	1389.894	144.73	DDH
22AUD0084	660484.429	7273701.376	1390.014	146.63	DDH
22AUD0085	660484.558	7273701.586	1389.926	146.76	DDH
22AUD0090	660484.241	7273701.439	1389.958	149.6	DDH
22AUD0104	660484.047	7273697.486	1390.032	194.28	DDH
22AUD0114	660579.414	7273672.249	1370.794	132.8	DDH
22AUD0121	660578.051	7273672.096	1370.892	123.22	DDH
22AUD0127A	660569.404	7273677.241	1370.64	116.74	DDH
22AUD0130	660569.64	7273673.126	1370.726	115.07	DDH
22AUD0142	660568.914	7273672.47	1370.748	174.72	DDH
22AUD0143	660569.346	7273672.38	1371.055	186	DDH
22AUD0152	660569.688	7273673.157	1370.735	161.65	DDH
22AUD0155	660568.976	7273672.46	1370.992	181.9	DDH
22AUD0157	660568.838	7273672.46	1370.851	154.7	DDH
22AUD0078	660482.055	7273706.727	1389.796	141.5	DDH
22AUD0082	660481.471	7273706.564	1389.621	144.9	DDH
22AUD0089	660481.507	7273706.468	1389.764	149.28	DDH
22AUD0095	660481.536	7273706.486	1389.763	174.55	DDH
22AUD0106	660481.864	7273695.881	1390.109	185.9	DDH
22AUD0117	660570.562	7273677.974	1370.639	117.63	DDH
22AUD0120	660570.443	7273677.143	1370.679	107.8	DDH
22AUD0122	660578.518	7273672.171	1370.808	132.8	DDH
22AUD0123	660578.529	7273671.812	1370.831	126	DDH
22AUD0124	660578.698	7273671.6	1370.889	148.8	DDH
22AUD0137	660569.823	7273673.24	1370.719	147.53	DDH
22AUD0146	660578.75	7273671.56	1370.82	166.05	DDH
22AUD0169	660510.213	7273725.98	1285.594	39	DDH
22AUD0101	660481.648	7273695.974	1390.074	187.6	DDH
22AUD0103	660481.775	7273695.587	1390.11	192.15	DDH
22AUD0105	660481.977	7273695.578	1390.107	185.5	DDH
22AUD0173	660542.6	7273580	1372.829	175.05	DDH
22AUD0179	660566.5	7273572	1372.523	182.03	DDH
22AUD0044	660479.1	7273700	1390.203	191	DDH
22AUD0125	660578.555	7273671.973	1370.81	142.7	DDH
22AUD0170	660542.6	7273580	1372.911	177	DDH
22AUD0174	660542.6	7273580	1372.234	168	DDH
22AUD0175	660542.7	7273580	1372.612	189	DDH
22AUD0176	660542.785	7273579.894	1372.227	147	DDH
22AUD0224	660419.713	7273610.751	1366.385	172	DDH
22AUD0177	660542.681	7273579.639	1372.197	145.69	DDH
22AUD0225	660419.555	7273610.655	1366.436	151	DDH
22AUD0235	660417.291	7273611.771	1365.945	159	DDH
22AUD0236	660396.242	7273607.893	1366.047	150	DDH
22AUD0178	660566.36	7273571.833	1372.734	192	DDH
22AUD0180	660566.341	7273571.881	1372.462	175	DDH
22AUD0181	660566.44	7273571.84	1372.39	150	DDH
22AUD0185	660566.45	7273571.49	1372.37	157.88	DDH
22AUD0186	660542.1395	7273579.708	1372.043	150.15	DDH
22AUD0222	660419.638	7273610.862	1366.379	168	DDH

HoleID	Easting (mE)	Northing (mN)	AbraMine_Elev (mRL)	Max_Depth (m)	Hole_Type
22AUD0223	660419.63	7273610.88	1366.366	155	DDH
22AUD0226	660419.55	7273610.65	1366.44	169	DDH
22AUD0227	660419.857	7273610.23	1365.897	159	DDH
22AUD0228	660419.545	7273610.123	1365.906	144	DDH
22AUD0187	660542.5513	7273579.266	1372.0734	149	DDH
22AUD0182	660591.4709	7273562.86	1372.3696	159.04	DDH
22AUD0183	660591.6426	7273562.772	1372.4058	186.1	DDH
22AUD0184	660591.6934	7273562.891	1372.478	187	DDH
22AUD0188	660542.677	7273579.391	1372.0487	151	DDH
22AUD0189	660542.891	7273579.847	1372.24	150	DDH
22AUD0229	660417.536	7273611.773	1366.118	170.1	DDH
22AUD0230	660417.368	7273611.799	1366.2	167.6	DDH
22AUD0231	660417.279	7273611.743	1366.022	170	DDH
22AUD0190	660591.0556	7273562.116	1372.502	152.08	DDH
22AUD0191	660591.367	7273561.939	1372.477	153.04	DDH
22AUD0192	660614.809	7273555.586	1372.847	179.01	DDH
22AUD0193	660614.816	7273555.503	1372.698	169.05	DDH
22AUD0232	660417.369	7273611.779	1366.097	193	DDH
22AUD0233	660417.19	7273611.756	1366.147	178	DDH
22AUD0234	660417.192	7273611.729	1366.028	173	DDH
22AUD0237	660395.9951	7273607.793	1366.032	144	DDH
22AUD0238	660396.1596	7273607.718	1366.025	149.6	DDH
22AUD0194	660614.844	7273555.462	1372.56	161.06	DDH
22AUD0195	660614.998	7273555.496	1372.84	185	DDH
22AUD0196	660615.009	7273555.442	1372.722	173	DDH
22AUD0197	660614.934	7273555.295	1372.552	163.08	DDH
22AUD0198	660637.5	7273546	1372.871	170	DDH
22AUD0199	660614.655	7273554.309	1372.554	156.07	DDH
22AUD0200	660637.3	7273547	1372.794	165	DDH
22AUD0201	660637.1	7273547	1373.059	160	DDH
22AUD0202	660614.929	7273554.11	1372.73	155.02	DDH
22AUD0203	660637.9	7273547	1373.256	203	DDH
22AUD0204	660638	7273547	1373.14	182.06	DDH
22AUD0205	660659.2	7273539	1373.145	192.04	DDH
22AUD0206	660659.107	7273539.166	1372.995	180	DDH
22AUD0207	660658.978	7273539.051	1373.013	170.07	DDH
22AUD0209	660637.5	7273546	1372.917	177.08	DDH
22AUD0239	660396.119	7273608.091	1366.044	158.05	DDH
22AUD0240	660340.691	7273618.161	1367.355	173	DDH
22AUD0241	660308.9	7273624	1368.003	187	DDH
22AUD0242	660309	7273624	1367.976	187.34	DDH
22AUD0243	660308.3	7273624	1368.085	204.1	DDH
22AUD0244	660309	7273624	1368.062	193.08	DDH
22AUD0245	660340.723	7273618.161	1367.163	155	DDH
22AUD0249	660340.362	7273617.278	1367.139	154.08	DDH
22AUD0250	660340.494	7273617.197	1367.122	163.07	DDH
22AUD0251	660340.6	7273618	1367.122	165	DDH
22AUD0256	660308.955	7273624.066	1367.713	214.06	DDH
22AUD0208	660658.789	7273538.352	1372.987	165	DDH
22AUD0210	660659.699	7273539.254	1372.969	197.64	DDH
22AUD0211	660659.274	7273538.514	1372.977	185.04	DDH
22AUD0212	660658.461	7273538.162	1372.933	175	DDH
22AUD0246	660308.496	7273623.742	1367.829	233	DDH
22AUD0247	660308.494	7273623.75	1367.815	190	DDH
22AUD0248	660308.744	7273623.596	1367.765	168	DDH
22AUD0252	660308.865	7273623.213	1367.717	161.02	DDH
22AUD0254	660265.362	7273631.72	1368.703	202.7	DDH
22AUD0255	660265.232	7273631.749	1368.747	224	DDH

HoleID	Easting (mE)	Northing (mN)	AbraMine_Elev (mRL)	Max_Depth (m)	Hole_Type
22AUD0261	660308.34	7273623.233	1368.113	194.97	DDH
22AUD0253	660251.081	7273634.228	1369.223	207.1	DDH
22AUD0257	660251.17	7273633.899	1369.143	198	DDH
22AUD0258	660265.442	7273631.564	1368.832	178	DDH
22AUD0259	660251.041	7273634.018	1368.985	181	DDH
22AUD0260	660265.571	7273630.85	1368.61	193	DDH
22AUD0262	660251.456	7273633.583	1369.1	172	DDH
22AUD0263	660265.74	7273631.143	1368.701	165	DDH
AUD0264	660236.368	7273636.554	1369.447	223	DDH
AUD0265	660236.066	7273636.784	1369.369	240	DDH
AUD0266	660236.391	7273636.727	1369.346	239.05	DDH
AUD0282	660679.984	7273532.024	1373.582	233	DDH
AUD0283	660679.957	7273531.906	1373.628	203.4	DDH
AUD0284	660679.622	7273531.684	1373.338	197.03	DDH
AUD0285	660681.388	7273530.037	1373.506	250.95	DDH
AUD0298	660614.066	7273555.544	1372.586	196	DDH
AUD0299	660614.158	7273555.546	1372.883	169	DDH
AUD0300	660614.371	7273555.506	1372.901	176.88	DDH
AUD0301	660614.133	7273555.321	1372.612	172	DDH
AUD0302	660614.415	7273555.27	1372.644	166.05	DDH
AUD0303	660614.462	7273554.963	1372.637	163.03	DDH
AUD0304	660614.417	7273554.847	1372.617	168	DDH
AUD0305	660613.828	7273554.953	1372.567	161.2	DDH
AUD0306	660614.255	7273555.217	1372.623	168.1	DDH
AUD0307	660236.557	7273636.689	1369.667	219	DDH
AUD0308	660328.564	7273809.758	1258.932	122	DDH
AUD0309	660328.056	7273810.543	1258.809	173	DDH
AUD0267	660236.654	7273636.698	1369.333	250	DDH
AUD0268	660236.525	7273636.041	1369.613	251.9	DDH
AUD0269	660236.387	7273636.217	1369.576	255.05	DDH
AUD0270	660236.503	7273636.245	1369.149	254	DDH
AUD0271	660236.124	7273636.318	1369.133	255	DDH
AUD0272	660231.921	7273637.298	1369.509	268	DDH
AUD0281	660236.199	7273636.772	1369.651	184	DDH
AUD0286	660681.21	7273530.064	1373.405	259.05	DDH
AUD0287	660680.879	7273530.19	1373.423	216.07	DDH
AUD0288	660680.175	7273531.907	1373.538	213	DDH
AUD0289	660680.798	7273531.378	1373.318	227	DDH
AUD0291	660680.186	7273531.346	1373.312	199	DDH
AUD0292	660680.255	7273531.227	1373.372	205	DDH
AUD0293	660677.466	7273528.266	1373.347	192.05	DDH
AUD0294	660677.162	7273528.081	1373.45	255.05	DDH
AUD0295	660677.105	7273527.988	1373.433	262	DDH
AUD0296	660679.903	7273527.999	1373.46	219	DDH
AUD0297	660680.03	7273527.785	1373.48	252	DDH
AUD0323	660236.464	7273636.701	1369.25	179.05	DDH
AUD0325	660236.78	7273636.496	1369.818	178	DDH
AUD0326	660546.495	7273617.706	1297.163	74	DDH
AUD0327	660546.287	7273617.654	1297.223	86	DDH
AUD0328	660545.924	7273617.62	1297.215	84.1	DDH
AUD0333	660545.244	7273617.766	1297.019	118.05	DDH
AUD0273	660231.966	7273637.34	1369.19	250	DDH
AUD0274	660232.418	7273637.026	1369.25	248.16	DDH
AUD0275	660231.503	7273636.875	1369.266	268.05	DDH
AUD0290	660680.318	7273531.668	1373.382	209.06	DDH
AUD0311	660509.195	7273586.007	1371.353	140.1	DDH
AUD0312	660510.048	7273585.746	1371.359	253.86	DDH
AUD0313	660509.846	7273586.013	1371.358	202	DDH

HoleID	Easting (mE)	Northing (mN)	AbraMine_Elev (mRL)	Max_Depth (m)	Hole_Type
AUD0315	660510.245	7273585.557	1371.353	176.35	DDH
AUD0276	660231.751	7273637.419	1369.242	260	DDH
AUD0277	660231.925	7273637.169	1369.233	255	DDH
AUD0278	660231.72	7273637.24	1369.365	283	DDH
AUD0314	660510.173	7273585.458	1371.614	152.15	DDH
AUD0316	660509.624	7273585.402	1371.591	143.5	DDH
AUD0382	660613.3131	7273680.444	1281.2052	51.08	DDH
AUD0383	660609.5412	7273680.303	1281.287	72	DDH
AUD0384	660597.338	7273674.357	1281.4193	58.97	DDH
AUD0385	660597.9949	7273673.673	1280.6214	49.09	DDH
AUD0386	660597.9143	7273674.511	1281.0827	50	DDH
AUD0279	660231.553	7273636.665	1369.22	266.06	DDH
AUD0280	660231.525	7273636.508	1369.235	278	DDH
AUD0389	660489.562	7273629.581	1281.63	100	DDH
AUD0390	660488.785	7273630.102	1281.457	98	DDH
AUD0391	660489.139	7273629.862	1281.337	97.8	DDH
AUD0329	660489.793	7273629.292	1281.678	119	DDH
AUD0330	660489.889	7273629.169	1281.672	132.9	DDH
AUD0331	660510.724	7273585.926	1371.366	180	DDH
AUD0332	660509.181	7273586.358	1371.392	280.18	DDH
AUD0334	660613.973	7273553.009	1372.712	195.55	DDH
AUD0335	660613.918	7273554.885	1372.646	198	DDH
AUD0336	660613.772	7273554.984	1372.618	188.1	DDH
AUD0353	660236.489	7273636.41	1369.141	212.07	DDH
AUD0356	660251.535	7273634.107	1369.353	188	DDH
AUD0357	660251.687	7273634.072	1369.318	179	DDH
AUD0358	660265.806	7273631.622	1368.995	229.1	DDH
AUD0359	660266.118	7273631.491	1369.438	237	DDH
AUD0381	660509.712	7273585.506	1371.48	277.1	DDH
AUD0387	660251.591	7273634.175	1369.73	191	DDH
AUD0388	660236.363	7273636.608	1369.234	211	DDH
AUD0392	660265.826	7273631.572	1368.609	137.6	DDH
AUD0394	660251.968	7273634.067	1369.324	174.3	DDH
AUD0337	660613.836	7273555.439	1372.557	210	DDH
AUD0338	660614.682	7273554.97	1372.569	199	DDH
AUD0339	660637.296	7273546.325	1372.82	203	DDH
AUD0340	660637.538	7273546.646	1372.817	204	DDH
AUD0341	660637.538	7273546.646	1372.817	205	DDH
AUD0342	660638.054	7273546.357	1372.823	228.05	DDH
AUD0343	660659	7273537.948	1372.949	215	DDH
AUD0344	660659.067	7273538.214	1372.97	199	DDH
AUD0345	660659.006	7273538.447	1372.95	198.8	DDH
AUD0354	660236.292	7273636.432	1369.078	213.1	DDH
AUD0355	660236.54	7273636.64	1369.141	217.1	DDH
AUD0360	660638.039	7273546.885	1373.15	211.8	DDH
AUD0361	660637.981	7273546.888	1373.116	201.05	DDH
AUD0362	660637.904	7273546.792	1372.93	229	DDH
AUD0363	660637.936	7273546.844	1373.151	215.7	DDH
AUD0395	660231.346	7273636.618	1369.447	172	DDH
AUD0396	660231.525	7273636.689	1369.351	237.1	DDH
AUD0397	660231.534	7273636.897	1369.3	233	DDH
AUD0398	660231.435	7273636.671	1369.253	244	DDH
AUD0399	660231.616	7273636.89	1369.289	226.9	DDH
AUD0400	660231.659	7273636.726	1369.17	230	DDH
AUD0401	660231.012	7273635.423	1369.37	229.05	DDH
AUD0402	660231.478	7273636.636	1369.3	238	DDH
AUD0403	660231.436	7273636.547	1369.401	212.7	DDH
AUD0404	660231.436	7273636.547	1369.401	219.13	DDH

HoleID	Easting (mE)	Northing (mN)	AbraMine_Elev (mRL)	Max_Depth (m)	Hole_Type
AUD0405	660231.542	7273636.741	1369.385	220.05	DDH
AUD0406	660231.542	7273636.741	1369.385	227	DDH
AUD0407	660231.065	7273635.305	1369.311	241	DDH
AUD0408	660231.03	7273635.431	1369.37	235.1	DDH
AUD0409	660231.191	7273635.599	1369.145	213	DDH
AUD0436	660477.645	7273791.214	1236.86	151.81	DDH
AUD0437	660477.88	7273791.118	1236.829	160	DDH
AUD0438	660478.358	7273790.995	1236.601	162	DDH
AUD0439	660477.492	7273791.287	1236.463	249	DDH
AUD0440	660477.974	7273791.03	1236.734	276	DDH
AUD0441	660477.868	7273791.142	1236.404	269	DDH
AUD0442	660478.2	7273791.008	1236.716	196	DDH
AUD0443	660478.359	7273790.964	1236.394	285.95	DDH
AUD0444	660478.499	7273790.962	1236.666	211.1	DDH
AUD0455	660554.8262	7273774.931	1223.4693	152	DDH
AUD0456	660638.055	7273546.797	1373.056	213.6	DDH
AUD0457	660637.964	7273546.779	1373.304	213.9	DDH
AUD0458	660658.442	7273539.667	1373.36	210.08	DDH
AUD0459	660659.085	7273538.043	1372.935	220.03	DDH
AUD0460	660658.952	7273539.366	1373.402	215	DDH
AUD0346	660659.043	7273538.588	1372.948	209	DDH
AUD0348	660659.278	7273538.576	1372.943	245	DDH
AUD0349	660659.57	7273538.603	1372.933	234	DDH
AUD0364	660659.791	7273539.229	1373.114	236	DDH
AUD0380	660659.851	7273539.206	1373.318	235	DDH
AUD0347A	660659.421	7273538.733	1372.952	226.05	DDH
AUD0365	660659.753	7273539.202	1373.418	242.8	DDH
AUD0366	660660.148	7273539.003	1373.355	249.4	DDH
AUD0412	660477.7	7273791.173	1236.446	156	DDH
AUD0413	660478.466	7273790.919	1236.3	130	DDH
AUD0414	660477.755	7273791.175	1237.024	160	DDH
AUD0415	660477.657	7273791.227	1237.008	164	DDH
AUD0416	660478.285	7273790.974	1236.301	301.1	DDH
AUD0417	660477.695	7273791.393	1236.375	311.9	DDH
AUD0418	660477.465	7273791.292	1236.389	278	DDH
AUD0419	660477.824	7273791.142	1236.84	157	DDH
AUD0420	660477.617	7273791.234	1236.558	182	DDH
AUD0421	660477.84	7273791.13	1236.661	241	DDH
AUD0422	660478.025	7273791.05	1236.866	155.05	DDH
AUD0423	660477.733	7273791.145	1236.562	287.8	DDH
AUD0424	660478.676	7273790.913	1236.892	155	DDH
AUD0425	660479.077	7273791.024	1236.643	284.4	DDH
AUD0427	660531.506	7273631.555	1252.846	380	DDH
AUD0428	660530.9464	7273631.812	1252.3959	380	DDH
AUD0434	660473.046	7273793.118	1236.303	271	DDH
AUD0435	660473.172	7273793.023	1236.344	259.25	DDH
AUD0461	660530.6877	7273632.765	1253.2989	86.17	DDH
AUD0462	660530.5511	7273633.126	1253.3013	95.9	DDH
AUD0463	660530.5637	7273633.1	1253.5067	94.05	DDH
AUD0464	660531.5703	7273632.002	1253.2753	94	DDH
AUD0465	660531.562	7273631.516	1252.704	111	DDH
AUD0466	660531.6872	7273631.64	1253.2237	120.05	DDH
AUD0467	660532.1247	7273631.131	1252.8754	144.1	DDH
AUD0468	660531.9873	7273631.057	1252.7441	141.9	DDH
AUD0469	660532.164	7273630.988	1252.802	162	DDH
AUD0471	660532.3849	7273631.039	1253.2464	207	DDH
AUD0475	660531.726	7273631.666	1253.3644	130.2	DDH
AUD0476	660532.1928	7273631.26	1253.416	140.1	DDH

HoleID	Easting (mE)	Northing (mN)	AbraMine_Elev (mRL)	Max_Depth (m)	Hole_Type
AUD0477	660531.5212	7273631.895	1253.1384	128.2	DDH
AUD0483	660531.701	7273631.92	1253.525	99.85	DDH
AUD0484	660531.8481	7273631.729	1253.5489	160	DDH
AUD0486	660531.3132	7273632.342	1253.6008	71.5	DDH
AUD0505	660530.96	7273631.784	1252.4002	152	DDH
AUD0426	660479.198	7273791.008	1236.751	130	DDH
AUD0445	660629.123	7273788.895	1217.011	198.07	DDH
AUD0446	660628.915	7273788.847	1216.466	205.1	DDH
AUD0447	660629.31	7273788.753	1216.613	170.1	DDH
AUD0448	660629.291	7273788.762	1216.603	195.06	DDH
AUD0449	660630.004	7273788.62	1216.828	263.1	DDH
AUD0450	660629.796	7273788.629	1216.769	187.2	DDH
AUD0488	660452.12	7273800.44	1236.546	150	DDH
AUD0489	660452.896	7273800.135	1236.881	229.7	DDH
AUD0490	660452.51	7273800.184	1237.022	130.18	DDH
AUD0491	660452.612	7273800.288	1236.785	155.45	DDH
AUD0492	660452.383	7273800.292	1236.842	205	DDH
AUD0493	660452.149	7273800.348	1237.097	115	DDH
AUD0494	660452.45	7273800.269	1236.623	257	DDH
AUD0495	660452.182	7273800.371	1236.824	212.6	DDH
AUD0496	660451.947	7273800.463	1237.05	126	DDH
AUD0506	660531.0758	7273631.79	1252.3836	134.86	DDH
AUD0451	660630.23	7273788.604	1216.624	245.5	DDH
AUD0452	660630.158	7273788.616	1217.009	170	DDH
AUD0453	660630.707	7273788.484	1216.663	265	DDH
AUD0454	660630.839	7273788.465	1216.884	306.1	DDH
AUD0497	660451.989	7273800.5	1236.772	262.07	DDH
AUD0498	660452.303	7273800.362	1236.818	249	DDH
AUD0499	660452.241	7273800.401	1236.7	243.17	DDH
AUD0500	660451.735	7273800.578	1236.964	260	DDH
AUD0501	660451.733	7273800.613	1236.669	275	DDH
AUD0502	660451.133	7273800.827	1236.762	276.9	DDH
AUD0503	660451.206	7273800.796	1236.452	323	DDH
AUD0507	660631.284	7273788.323	1216.65	337.9	DDH
AUD0508	660630.665	7273788.497	1216.634	353	DDH
AUD0350	660680.316	7273531.882	1373.414	220.1	DDH
AUD0351	660680.636	7273531.626	1373.365	252	DDH
AUD0352	660680.347	7273531.883	1373.653	255	DDH
AUD0367	660680.771	7273531.711	1373.472	250.05	DDH
AUD0368	660680.777	7273531.711	1373.644	263	DDH
AUD0369	660681.031	7273531.568	1373.511	254	DDH
AUD0370A	660681.404	7273530.051	1373.361	267.05	DDH
AUD0379	660677.316	7273527.652	1373.333	289.1	DDH
AUD0504	660451.125	7273800.83	1236.392	324.4	DDH
AUD0510	660631.493	7273788.274	1216.536	336	DDH
AUD0511	660630.81	7273788.458	1216.72	272.8	DDH
AUD0513	660631.567	7273788.292	1216.708	280	DDH
AUD0371	660681.465	7273530.443	1373.72	240.1	DDH
AUD0372	660681.33	7273529.677	1373.444	268	DDH
AUD0373	660681.515	7273530.135	1373.801	274	DDH
AUD0374	660680.538	7273527.85	1373.682	285.05	DDH
AUD0377	660681.453	7273530.327	1373.594	215.05	DDH
AUD0378	660681.426	7273529.989	1373.557	229.15	DDH
AUD0529	660341.039	7273767.749	1259.827	78.05	DDH
AUD0530	660340.708	7273767.79	1259.839	100.1	DDH
AUD0531	660340.508	7273767.836	1259.868	107	DDH
AUD0532	660340.238	7273767.904	1259.887	132	DDH
AUD0533	660338.97	7273768.251	1259.814	143.1	DDH

HoleID	Easting (mE)	Northing (mN)	AbraMine_Elev (mRL)	Max_Depth (m)	Hole_Type
AUD0534	660448.952	7273801.435	1236.913	250	DDH
AUD0535	660448.824	7273801.683	1236.875	237.1	DDH
AUD0536	660449.057	7273801.41	1236.434	260	DDH
AUD0375	660680.167	7273528.186	1373.379	247	DDH
AUD0376	660679.856	7273527.874	1373.425	225.05	DDH
AUD0537	660448.87	7273801.583	1236.547	260.05	DDH
AUD0538A	660448.799	7273801.507	1236.87	300	DDH
AUD0539	660456.007	7273798.96	1236.335	177	DDH
AUD0544	660222.423	7273743.44	1238.235	180	DDH
AUD0545	660222.739	7273743.517	1238.162	189	DDH
AUD0546	660222.911	7273743.589	1237.81	105	DDH
AUD0557	660222.672	7273743.506	1238.026	192	DDH
AUD0574	660424.88	7273768.204	1186.321	219.15	DDH
AUD0575	660424.479	7273768.146	1186.4	261.1	DDH
AUD0558	660222.331	7273743.393	1238.119	210.4	DDH
AUD0559	660222.665	7273743.571	1238.389	120	DDH
AUD0576	660418.883	7273765.739	1186.081	168.1	DDH
AUD0560	660222.683	7273743.507	1238.032	193.7	DDH
AUD0577	660418.351	7273765.594	1186.165	243	DDH
AUD0578	660419.035	7273765.937	1185.465	307.2	DDH
AUD0579	660417.806	7273766.128	1186.208	264	DDH
AUD0561	660222.313	7273743.414	1238.337	170	DDH
AUD0567	660134.743	7273779.074	1229.279	120.2	DDH
AUD0568	660134.812	7273779.392	1228.337	190	DDH
AUD0569	660134.634	7273779.379	1228.95	160	DDH
AUD0570	660134.594	7273779.474	1228.992	182	DDH
AUD0580	660418.255	7273766.049	1185.527	267	DDH
AUD0581	660418.868	7273765.851	1185.411	265.2	DDH
AUD0582	660423.745	7273768.252	1185.429	420	DDH
AUD0571	660134.49	7273779.672	1229.118	170.1	DDH
AUD0572	660134.637	7273779.632	1228.49	229.6	DDH
AUD0540	660455.315	7273799.16	1236.373	183	DDH
AUD0541	660455.186	7273799.208	1236.379	186	DDH
AUD0542	660454.924	7273799.262	1236.311	225	DDH
AUD0543	660454.771	7273799.316	1236.306	228.4	DDH
AUD0562	660143.488	7273768.246	1231.044	142	DDH
AUD0563	660143.69	7273768.085	1230.77	104.05	DDH
AUD0564	660143.494	7273768.245	1230.338	177.7	DDH
AUD0565	660143.248	7273768.418	1230.786	145.05	DDH
AUD0566	660143.267	7273768.387	1230.257	172.25	DDH
AUD0573	660134.653	7273779.597	1228.63	200	DDH
AUD0583	660423.963	7273768.299	1185.366	430.7	DDH
AUD0584	660364.28	7273656.091	1258.779	15.1	DDH
AUD0586	660383.775	7273655.2	1259.492	20	DDH
AUD0587	660383.893	7273655.07	1258.215	20.1	DDH
AUD0514	660630.962	7273788.403	1216.606	292.8	DDH
AUD0515	660629.398	7273788.806	1216.309	362.1	DDH
AUD0516	660629.514	7273788.728	1216.3	379	DDH
AUD0519	660630.133	7273788.8	1216.321	372	DDH
AUD0523	660472.236	7273793.221	1235.454	200.8	DDH
AUD0524	660472.086	7273793.22	1235.481	240	DDH
AUD0525	660471.94	7273793.256	1235.569	242.9	DDH
AUD0588	660455.559	7273799.099	1236.403	170	DDH
AUD0589	660455.95	7273798.976	1236.393	155	DDH
AUD0590	660456.24	7273798.873	1236.388	159.2	DDH
AUD0640	660618.4862	7273551.777	1216.8653	212	DDH
AUD0641	660618.464	7273551.809	1216.8656	120.1	DDH
AUD0636	660618.4862	7273551.777	1216.8653	127.9	DDH

HoleID	Easting (mE)	Northing (mN)	AbraMine_Elev (mRL)	Max_Depth (m)	Hole_Type
AUD0637	660618.464	7273551.809	1216.8656	129.1	DDH
AUD0638	660618.4862	7273551.777	1216.8653	100	DDH
AUD0639	660618.4862	7273551.777	1216.8653	168.1	DDH
AUD0591	660261.9065	7273554.014	1260.3447	80	DDH
AUD0597	660261.9065	7273554.014	1260.3447	186	DDH
AUD0517	660629.485	7273788.778	1216.411	383.9	DDH
AUD0518	660629.587	7273788.765	1216.46	345	DDH
AUD0521	660630.305	7273788.798	1216.303	385.7	DDH
AUD0592	660261.9065	7273554.014	1260.3447	85	DDH
AUD0593	660261.9065	7273554.014	1260.3447	90.05	DDH
AUD0594	660261.9065	7273554.014	1260.3447	117.1	DDH
AUD0595	660261.9065	7273554.014	1260.3447	160	DDH
AUD0596	660261.9065	7273554.014	1260.3447	104.05	DDH
AUD0598	660308.049	7273538.501	1259.946	95.05	DDH
AUD0642	660261.323	7273554.219	1261.411	134.5	DDH
AUD0643	660261.52	7273554.242	1261.207	104.8	DDH
AUD0644	660262.332	7273553.952	1260.73	105.1	DDH
AUD0520	660630.286	7273788.713	1216.39	370.05	DDH
AUD0522	660630.412	7273788.672	1216.384	340	DDH
AUD0599	660307.513	7273538.712	1259.44	79.15	DDH
AUD0601	660307.401	7273538.568	1259.187	107.03	DDH
AUD0602	660308.272	7273538.519	1259.53	90	DDH
AUD0603	660308.259	7273538.373	1259.254	85.05	DDH
AUD0604	660307.311	7273538.261	1259.212	85.7	DDH
AUD0605	660250.8241	7273557.679	1260.9571	85	DDH
AUD0606	660248.4188	7273557.988	1261.4224	105.1	DDH
AUD0607	660248.4188	7273557.988	1261.4224	115	DDH
AUD0608	660248.4188	7273557.988	1261.4224	125	DDH
AUD0609	660247.0335	7273555.697	1261.3393	95	DDH
AUD0610	660247.0335	7273555.697	1261.3393	105	DDH
AUD0611	660247.0335	7273555.697	1261.3393	114	DDH
AUD0612	660247.0335	7273555.697	1261.3393	117	DDH
AUD0613	660247.897	7273557.069	1260.572	97.8	DDH
AUD0614	660249.057	7273556.39	1260.401	95	DDH
AUD0615	660247.917	7273557.252	1260.895	155	DDH
AUD0616	660247.876	7273556.863	1260.67	150.1	DDH
AUD0617	660247.885	7273557.182	1260.879	158.8	DDH
AUD0618	660248.115	7273556.707	1260.458	130	DDH
AUD0619	660247.907	7273556.993	1260.68	147	DDH
AUD0620	660255.477	7273550.823	1260.192	132	DDH
AUD0621	660256.486	7273550.695	1260.165	134	DDH
AUD0622	660256.215	7273550.66	1260.179	142	DDH
AUD0623	660255.557	7273550.876	1260.218	166	DDH
AUD0624	660256.013	7273552.215	1260.177	155	DDH
AUD0625	660256.196	7273551.839	1260.153	155.8	DDH
AUD0626	660255.716	7273552.48	1260.197	200.1	DDH
AUD0627	660256.555	7273550.399	1260.194	188.3	DDH
AUD0645	660630.655	7273788.584	1216.431	370	DDH
AUD0646	660630.511	7273788.607	1216.462	383	DDH
AUD0647	660630.315	7273788.694	1216.171	460	DDH
AUD0648	660630.149	7273788.768	1216.194	435.2	DDH
AUD0649	660629.951	7273788.745	1216.283	502.8	DDH
AUD0628	660315.9	7273530.301	1258.893	150	DDH
AUD0635	660302.549	7273535.951	1259.276	134.05	DDH
AUD0656	660443.196	7273523.443	1264.555	170	DDH
AUD0629	660316.546	7273530.944	1258.912	105	DDH
AUD0630	660315.597	7273530.416	1258.933	129.7	DDH
AUD0631	660316.385	7273530.337	1258.927	144	DDH

HoleID	Easting (mE)	Northing (mN)	AbraMine_Elev (mRL)	Max_Depth (m)	Hole_Type
AUD0632	660316.825	7273530.325	1258.926	142	DDH
AUD0633	660331.074	7273524.616	1258.719	109.6	DDH
AUD0634	660331.598	7273524.683	1258.758	155.1	DDH
AUD0654	660443.107	7273523.195	1264.541	170	DDH
AUD0655	660443.05	7273523.533	1264.613	173	DDH
AUD0657	660442.956	7273523.243	1264.55	115	DDH
AUD0658	660443.17	7273523.334	1264.556	212.6	DDH
AUD0659	660443.022	7273523.115	1264.571	190	DDH
AUD0660	660447.169	7273521.469	1264.569	206.8	DDH
AUD0661	660447.307	7273521.649	1264.487	196.4	DDH
AUD0662	660447.289	7273521.324	1264.479	230	DDH
AUD0663	660447.376	7273521.385	1264.482	212.7	DDH
AUD0666	660330.724	7273524.132	1258.724	132	DDH
AUD0669	660607.833	7273454.076	1252.175	84.9	DDH
AUD0670	660607.605	7273454.118	1252.126	72	DDH
AUD0671	660607.093	7273453.82	1251.878	73	DDH
AUD0672	660607.577	7273454.184	1251.839	71	DDH
AUSH0002	660561.48	7273722.22	1217.77	51.3	DDH
AUD0650	660443.923	7273529.437	1264.744	85.05	DDH
AUD0651	660444.003	7273529.532	1264.753	75	DDH
AUD0652	660444.247	7273529.099	1264.61	70	DDH
AUD0653	660444.222	7273528.933	1264.545	70	DDH
AUD0664	660447.288	7273521.549	1264.503	173.94	DDH
AUD0673	660607.704	7273453.922	1251.835	75.03	DDH
AUD0674	660608.553	7273453.92	1252.232	88.97	DDH
AUD0675	660608.041	7273453.849	1251.82	85.02	DDH
AUD0676	660607.78	7273453.889	1251.844	80.05	DDH
AUD0677	660607.645	7273453.477	1251.872	90	DDH
AUD0678	660607.547	7273453.899	1251.889	85.03	DDH
AUD0679	660607.641	7273453.591	1251.885	90.06	DDH
AUD0680	660604.071	7273450.653	1251.986	100	DDH
AUD0681	660640.775	7273440.265	1247.513	100	DDH
AUD0682	660640.591	7273440.314	1247.208	80	DDH
AUD0683	660640.891	7273440.181	1247.388	105	DDH
AUD0684	660640.696	7273440.234	1247.216	85.1	DDH
AUD0685	660640.643	7273439.643	1247.202	82	DDH
AUD0686	660640.696	7273438.934	1247.122	106	DDH
AUD0687	660641.116	7273439.199	1247.014	100	DDH
AUD0688	660641.174	7273440.132	1247.441	89.9	DDH
AUD0689	660640.412	7273439.416	1247.127	120	DDH
AUD0690	660569.496	7273465.683	1256.186	140	DDH
AUD0691	660568.96	7273465.842	1256.22	115	DDH
AUD0692	660569.244	7273465.249	1256.178	135	DDH
AUD0713	660442.885	7273522.157	1264.588	250.08	DDH
AUD0714	660442.88	7273522.083	1264.6	249.1	DDH
AUD0716	660447.274	7273521.597	1264.365	150	DDH
AUD0717	660471.258	7273542.451	1263.883	99.9	DDH
AUD0718	660471.39	7273542.816	1263.911	74	DDH
AUD0719	660471.599	7273542.939	1263.976	64	DDH
AUD0720	660751.304	7273454.556	1233.604	100	DDH
AUD0728	660751.183	7273454.352	1233.379	95	DDH
AUD0729	660751.381	7273454.619	1233.447	85	DDH
AUD0730	660751.89	7273455.03	1233.481	89.7	DDH
AUD0736	660623.391	7273623.658	1233.325	35.2	DDH
AUD0737	660564.349	7273601.926	1234.953	30	DDH
AUD0738	660566.392	7273602.386	1235.809	35	DDH
AUD0739	660648.497	7273638.375	1231.969	27	DDH
AUD0721	660767.437	7273467.976	1233.943	128	DDH

HoleID	Easting (mE)	Northing (mN)	AbraMine_Elev (mRL)	Max_Depth (m)	Hole_Type
AUD0722	660784.546	7273481.604	1234.219	94.9	DDH
AUD0723	660784.911	7273481.911	1234.282	115	DDH
AUD0724	660785.152	7273482.143	1234.07	95	DDH
AUD0726	660767.273	7273467.744	1233.703	85	DDH
AUD0727	660767.536	7273467.975	1233.675	85	DDH
AUD0734	660648.497	7273638.375	1231.969	30	DDH
AUD0735	660654.732	7273637.365	1231.317	25	DDH
AUD0740	660654.732	7273637.365	1231.317	20	DDH
AUD0741	660546.517	7273476.841	1257.507	135	DDH
AUD0742	660546.336	7273476.533	1257.446	129	DDH
AUD0743	660546.696	7273476.412	1257.47	136.6	DDH
AUD0746	660541.203	7273478.48	1257.329	156	DDH
AUD0694	660391.143	7273723.961	1187.269	157.04	DDH
AUD0725	660784.874	7273481.54	1233.786	220	DDH
AUD0744	660546.875	7273476.705	1257.466	132	DDH
AUD0745	660546.244	7273476.426	1257.415	161.92	DDH
AUD0748	660751.902	7273455.17	1233.71	135	DDH
AUD0693	660391.249	7273723.98	1187.243	228.9	DDH
AUD0695	660388.137	7273726.786	1186.947	221	DDH
AUD0715	660447.262	7273521.719	1264.355	135	DDH
AUD0731	660725.723	7273434.26	1235.136	97	DDH
AUD0732	660726.076	7273434.421	1235.01	90.1	DDH
AUD0747	660751.957	7273455.223	1234.02	87	DDH
AUD0749	660751.461	7273454.796	1233.958	110	DDH
AUD0750	660751.656	7273454.993	1233.97	145	DDH
AUD0696	660388.087	7273726.848	1187.063	208.6	DDH
AUD0698	660379.5068	7273738.247	1186.6591	197.05	DDH
AUD0699	660379.4859	7273738.299	1186.7383	208	DDH
AUD0733	660675.937	7273425.347	1242.098	85	DDH
AUD0751	660516.826	7273676.866	1170.384	190	DDH
AUD0700	660379.2481	7273738.945	1186.6765	212.1	DDH
AUD0701	660379.1237	7273739.04	1186.7339	205.85	DDH
AUD0753	660517.427	7273676.82	1170.666	512.8	DDH
AUD0702	660379.5076	7273737.818	1187.4901	150.05	DDH
AUD0703	660379.4398	7273738.032	1187.4878	160	DDH
AUD0704	660379.3924	7273738.151	1187.4706	98	DDH
AUD0752	660517.508	7273676.72	1170.41	197	DDH
AUD0761	660541.511	7273479.462	1257.601	85	DDH
AUD0705	660390.649	7273723.958	1187.101	254.1	DDH
AUD0706	660390.541	7273723.858	1186.969	281.8	DDH
AUD0764	660540.514	7273478.716	1257.973	253.87	DDH
AUD0765	660767.504	7273466.636	1233.351	85	DDH
AUD0766	660767.515	7273466.241	1233.353	99.9	DDH
AUD0767	660768.038	7273466.751	1233.36	85	DDH
AUD0768	660768.085	7273467.165	1233.375	65	DDH
AUD0769	660784.969	7273481.13	1233.739	64.9	DDH
AUD0770	660785.083	7273481.791	1233.758	72.6	DDH
AUD0697	660388.022	7273726.934	1187.078	203	DDH
AUD0707	660391.998	7273724.464	1186.984	293.9	DDH
AUD0708	660392.126	7273724.567	1186.979	252	DDH
AUD0709	660390.321	7273723.684	1186.896	362	DDH
AUD0710	660391.268	7273724.254	1186.88	294	DDH
AUD0711	660391.985	7273724.24	1186.847	296.9	DDH
AUD0712	660392.088	7273724.391	1186.802	308.8	DDH
AUD0754	660516.5988	7273676.841	1170.7209	169.35	DDH
AUD0755	660516.7871	7273676.83	1170.636	211	DDH
AUD0756	660517.2904	7273676.76	1170.7151	172	DDH
AUD0757	660517.3606	7273676.82	1170.5418	215.2	DDH

HoleID	Easting (mE)	Northing (mN)	AbraMine_Elev (mRL)	Max_Depth (m)	Hole_Type
AUD0758	660517.5386	7273676.77	1170.5187	450	DDH
AUD0759	660518.0368	7273676.696	1170.686	160	DDH
AUD0760	660518.1549	7273676.582	1170.7914	177.3	DDH
AUD0762	660540.937	7273479.298	1257.561	105	DDH
AUD0763	660540.472	7273479.513	1257.813	100	DDH
AUD0771	660795.282	7273490.181	1234.633	103.4	DDH
AUD0772	660795.491	7273490.379	1234.997	143	DDH
AUD0773	660798.247	7273491.402	1234.438	85	DDH
AUD0774	660795.405	7273490.305	1234.093	75	DDH
AUD0775	660795.436	7273490.311	1234.28	99.2	DDH
AUD0776	660795.356	7273489.795	1233.953	65	DDH
AUD0777	660798.241	7273491.533	1234.607	80.1	DDH
AUD0778	660797.5817	7273491.73	1234.757	149.95	DDH
AUD0779	660798.308	7273491.265	1234.279	79.9	DDH
AUD0780	660798.404	7273491.344	1234.598	100	DDH
AUD0781	660798.732	7273491.001	1234.126	100	DDH
AUD0782	660798.959	7273490.794	1234.192	90	DDH
AUD0783	660798.995	7273490.876	1234.331	98.7	DDH
AUD0784	660798.868	7273490.901	1234.258	100	DDH
AUD0785	660798.815	7273490.928	1234.258	95	DDH
AUD0786	660800.7149	7273489.265	1234.2729	75	DDH
AUD0787	660800.609	7273488.72	1234.25	95	DDH
AUD0788	660800.6752	7273489.24	1234.3187	100	DDH
AUD0789	660800.7149	7273489.265	1234.2729	120	DDH
AUD0796	660552.8	7273697.2	1166.1	184.4	DDH
AUD0799	660524.879	7273692.006	1171.3052	100	DDH
AUD0800	660525.2789	7273692.607	1170.8835	105	DDH
AUD0801	660524.9637	7273692.313	1170.105	82	DDH
AUD0803	660390.645	7273723.777	1186.814	395	DDH
AUD0804	660796.9379	7273484.09	1234.95	95	DDH
AUD0805	660796.9379	7273484.09	1234.95	86.9	DDH
AUD0806	660796.9379	7273484.09	1234.95	117	DDH
AUD0807	660796.9379	7273484.09	1234.95	113.6	DDH
AUD0808	660796.9379	7273484.09	1234.95	120	DDH
AUD0809	660796.9379	7273484.09	1234.95	87	DDH
AUD0811	660796.9379	7273484.09	1234.95	130	DDH
AUD0812	660389.841	7273723.5	1188.579	37	DDH
AUD0813	660392.15	7273724.277	1188.367	35	DDH
AUD0814	660393.849	7273725.027	1188.232	45	DDH
AUD0815	660394.128	7273724.96	1188.229	50	DDH
AUD0816	660515.83	7273677.137	1170.304	260	DDH
AUD0817	660515.9246	7273677.088	1170.3725	371.1	DDH
AUD0818	660516.6327	7273676.916	1170.3677	256	DDH
AUD0819	660516.7018	7273676.924	1170.2236	317	DDH
AUD0820	660517.3369	7273676.824	1170.2985	299.6	DDH
AUD0821	660517.531	7273676.807	1170.2488	230	DDH
AUD0822	660785.8708	7273457.443	1234.1208	96	DDH
AUD0823	660785.8708	7273457.443	1234.1208	92.8	DDH
AUD0824	660786.2837	7273450.482	1234.9118	122	DDH
AUD0825	660786.2837	7273450.482	1234.9118	122	DDH
AUD0826	660786.2837	7273450.482	1234.9118	129.3	DDH
AUD0827	660780.9447	7273454.322	1234.8507	275.7	DDH
AUD0828	660780.9447	7273454.322	1234.8507	150	DDH
AUD0829	660781.1992	7273454.521	1233.7875	126.4	DDH
AUD0830	660780.9444	7273454.978	1233.8254	115	DDH
AUD0831	660781.5945	7273454.579	1233.9907	162	DDH
AUD0832	660781.6827	7273454.59	1233.987	110	DDH
AUD0834	660780.7147	7273454.853	1233.7959	200.3	DDH

HoleID	Easting (mE)	Northing (mN)	AbraMine_Elev (mRL)	Max_Depth (m)	Hole_Type
AUD0835	660725.5513	7273427.734	1235.672	144	DDH
AUD0836	660725.5881	7273427.552	1235.6623	130	DDH
AUD0837	660725.8864	7273427.477	1235.6685	99.3	DDH
AUD0838	660725.9903	7273427.958	1235.6402	203	DDH
AUD0839	660707.4294	7273419.567	1237.9774	99.3	DDH
AUD0840	660708.1911	7273420.09	1237.9419	99	DDH
AUD0841	660707.9229	7273419.824	1237.956	101	DDH
AUD0842	660707.7751	7273419.612	1237.9985	100	DDH
AUD0843	660689.9604	7273413.362	1241.1355	140	DDH
AUD0844	660689.9604	7273413.362	1241.1354	162	DDH
AUD0845	660689.9604	7273413.362	1241.1354	137	DDH
AUD0846	660689.9604	7273413.362	1241.1354	155	DDH
AUD0847	660689.9604	7273413.362	1241.1354	212	DDH
AUD0848	660666.9537	7273403.981	1242.8082	145	DDH
AUD0849	660665.6939	7273403.915	1242.8728	145	DDH
AUD0850	660666.0506	7273404.04	1242.8439	145	DDH
AUD0790	660553.3	7273697.2	1166.4	180	DDH
AUD0792	660553	7273697.2	1166.2	220.15	DDH
AUD0793	660553.2	7273697.1	1166.2	275	DDH
AUD0851	660666.2765	7273407.659	1242.8523	175	DDH
AUD0852	660629.045	7273439.825	1248.856	105	DDH
AUD0853	660628.8954	7273439.696	1248.8192	128	DDH
AUD0854	660628.7923	7273439.931	1248.8465	155	DDH
AUD0855	660628.7875	7273439.458	1248.8924	140	DDH
AUD0791	660553.6	7273697	1166.3	220	DDH
AUD0794	660553.2	7273697.2	1166	280	DDH
AUD0795	660553.6	7273697	1166.1	200	DDH
AUD0857	660607.2278	7273448.396	1251.5881	173.8	DDH
AUD0858	660606.8196	7273448.56	1251.6319	140	DDH
AUD0859	660570.2202	7273463.805	1256.0133	149	DDH
AUD0862	660569.4275	7273464.259	1256.3316	150	DDH
AUD0860	660569.6963	7273464.045	1256.2818	172	DDH
AUD0861	660569.5777	7273464.174	1256.2147	182	DDH
AUD0864	660183.1604	7273567.14	1261.838	105	DDH
AUD0870	660516.2481	7273677.076	1169.851	350	DDH
AUD0871	660516.3756	7273676.98	1169.8011	462	DDH
AUD0863	660545.6241	7273476.342	1258.1442	209.1	DDH
AUD0865	660183.7362	7273567.091	1261.9219	119.9	DDH
AUD0866	660183.2281	7273566.736	1261.819	130	DDH
AUD0867	660183.2658	7273566.514	1261.9888	150	DDH
AUD0868	660161.1438	7273571.231	1262.2531	80	DDH
AUD0869	660160.9913	7273571.612	1262.2473	105	DDH
AUD0872	660516.9962	7273676.923	1169.7733	500.1	DDH
AUD0873	660517.1088	7273677.038	1169.8149	500	DDH
AUD0874	660206.9246	7273598.488	1262.0188	85	DDH
AUD0875	660206.8734	7273598.474	1262.3084	102	DDH
AUD0876	660207.0409	7273598.511	1262.3988	102	DDH
AUD0878	660207.6702	7273598.308	1262.3012	108	DDH
AUD0877	660207.0967	7273598.415	1261.992	97	DDH
AUD0879	660092.529	7273720.866	1229.323	75.3	DDH
AUD0880	660091.909	7273721.157	1231.234	33	DDH
AUD0881	660093.383	7273720.957	1229.759	68	DDH
AUD0882	660114.62	7273716.648	1232.813	50	DDH
AUD0883	660092	7273592	1264.2	110	DDH
AUD0884	660092	7273592	1264.2	107	DDH
AUD0885	660092.5	7273591.9	1264.1	95	DDH
AUD0886	660128.1	7273584	1263.3	164.1	DDH
AUD0887	660128.5	7273584	1263.4	112	DDH

HoleID	Easting (mE)	Northing (mN)	AbraMine_Elev (mRL)	Max_Depth (m)	Hole_Type
AUD0888	660128.5	7273583.6	1262.9	95	DDH
AUD0889	660128.8	7273584.1	1263.3	97	DDH
AUD0890	660128.5	7273583.8	1263.4	115	DDH
AUD0891	660128.6	7273584	1263.4	104.9	DDH
AUD0892	660128.8	7273584	1263.1	123	DDH
AUD0893	660160.7	7273576.9	1262.3	67	DDH
AUD0894	660160.7	7273576.9	1262.3	95	DDH
AUD0896	660552.848	7273697.312	1165.895	320	DDH
AUD0897	660552.98	7273697.591	1165.768	320	DDH
AUD0898	660553.045	7273697.393	1165.999	460	DDH
AUD0899	660552.8	7273697.3	1165.7	420	DDH
AUD0900	660552.6	7273697.4	1165.8	446.6	DDH
AUD0901	660092.9	7273591.1	1263.7	90	DDH
AUD0902	660092.8	7273590.8	1263.7	90	DDH
AUD0903	660093	7273590.7	1263.7	87	DDH
AUD0904	660093.2	7273590.8	1263.7	87	DDH
AUD0905	660092.6	7273591.8	1263.7	87	DDH
AUD0906	660092.8	7273591.8	1263.7	90	DDH
AUD0907	660093.6	7273591.6	1264.1	96	DDH
AUD0908	660093.1	7273591.9	1263.9	105	DDH
AUD0909	660092.8	7273591.9	1263.9	96	DDH
AUD0910	660092.8	7273591.9	1264	105	DDH
AUD0911	660092.8	7273590.7	1263.6	96	DDH
AUD0912	660061.3	7273597.5	1264.2	87	DDH
AUD0913	660061.2	7273598.5	1264.3	89	DDH
AUD0914	660061.1	7273598.5	1264.7	105	DDH
AUD0915	660061.8809	7273598.252	1264.517	102	DDH
AUD0916	660008.8551	7273609.109	1265.6301	88.1	DDH
AUD0917	660008.8551	7273609.109	1265.6301	87	DDH
AUD0918	660008.6157	7273609.109	1265.6301	102	DDH
AUD0919	660008.8551	7273609.109	1265.6301	111	DDH
AUD0920	660744.4141	7273666.154	1269.5717	110	DDH
AUD0921	660744.5388	7273666.125	1269.7571	70	DDH
AUD0922	660745.5183	7273664.979	1269.5281	70	DDH
AUD0923	660745.644	7273664.76	1269.3936	70	DDH
AUD0924	660745.722	7273664.735	1269.5595	105	DDH
AUD0925	660745.7677	7273664.642	1269.4581	121	DDH
AUD0926	660744.6343	7273661.981	1269.1634	60	DDH
AUD0927	660617.1	7273654.7	1164.5	165	DDH
AUD0928	660617.2	7273654.8	1163.8	240	DDH
AUD0929	660617.1	7273654.9	1163.7	250	DDH
AUD0930	660617	7273654.9	1163.2	363.2	DDH
AUD0931	660617	7273655.1	1163.2	350	DDH
AUD0932	660006.532	7273609.416	1265.967	108.3	DDH
AUD0933	660006.1	7273609.33	1265.32	93	DDH
AUD0934	660006.7	7273609.54	1265.58	107	DDH
AUD0935	660006.1	7273609.68	1265.7	118	DDH
AUD0936	660006.2	7273609.52	1266.09	141	DDH
AUD0937	660006.1	7273609.66	1265.78	119	DDH
AUD0938	660006.3	7273608.8	1265.34	100	DDH
AUD0939	660006.7	7273609.54	1265.58	114	DDH
AUD0940	660004.8	7273609.9	1266	98	DDH
AUD0941	660004.8	7273609.9	1266	98	DDH
AUD0942	659972.7	7273615.9	1267.3	102	DDH
AUD0943	659973.3	7273615.92	1265.96	113.9	DDH
AUD0945	659973.6	7273616.31	1265.99	114	DDH
AUD0946	659972.9	7273616.56	1266.18	141	DDH
AUD0947	659973.3	7273616.43	1266.51	154	DDH

HoleID	Easting (mE)	Northing (mN)	AbraMine_Elev (mRL)	Max_Depth (m)	Hole_Type
AUD0948	659973.5	7273616.37	1266.25	149	DDH
AUD0949	659972.1	7273616.6	1266.05	153.1	DDH
AUD0950	659972.7	7273615.9	1267.3	129.15	DDH
AUD0951	659972.8	7273616.51	1266.34	146	DDH
AUD0967	660843.4031	7273528.688	1235.3995	50	DDH
AUD0968	660843.5782	7273528.872	1235.7318	85	DDH
AUD0969	660843.8834	7273529.063	1235.8534	130	DDH
AUD0970	660843.6887	7273528.857	1235.2565	55	DDH
AUD0973	660858.3974	7273541.191	1236.7354	130	DDH
AUD0974	660859.6431	7273540.021	1235.8974	67	DDH
AUD0975	660858.6941	7273541.074	1236.7972	130	DDH
AUD0976	660874.9603	7273552.587	1236.4026	55	DDH
AUD0978	660875.5639	7273552.031	1236.3332	70	DDH
AUD0983	660482.6928	7273656.31	1190.7146	84.15	DDH
AUD0984	660483.0623	7273656.326	1190.6207	130	DDH
AUD0985	660482.8885	7273656.29	1190.7369	85	DDH
AUD0977	660874.2465	7273553.162	1236.6891	60	DDH
AUD0980	660874.917	7273553.748	1236.8898	121	DDH
AUD0981	660874.9755	7273553.931	1236.5079	88.6	DDH
AUD0996	660864.5151	7273538.861	1235.8832	120	DDH
AUD0957	659972.5	7273616.3	1267	165	DDH
AUD0991	660878.8805	7273549.959	1236.3767	115	DDH
AUD0997	660864.4738	7273539.076	1235.9169	108	DDH
AUD0998	660865.3184	7273538.415	1235.9786	92	DDH
AUD0999	659974.3124	7273610.631	1265.9197	105	DDH
AUD1014	660485.9572	7273424.646	1215.4934	78	DDH
AUD1016	660482.3948	7273407.351	1214.0429	105	DDH
AUD1017	660483.0109	7273406.783	1213.6262	93	DDH
AUD0986	660879.9565	7273554.686	1236.5416	66	DDH
AUD0987	660880.7936	7273554.443	1236.9834	78	DDH
AUD0989	660880.7665	7273554.289	1236.6684	76	DDH
AUD0992	660874.5089	7273547.419	1236.1704	74	DDH
AUD0993	660874.4962	7273547.262	1236.1584	70	DDH
AUD0994	660864.532	7273539.364	1235.8925	84	DDH
AUD1015	660490.5107	7273423.144	1215.422	126	DDH
AUD1018	660482.93	7273407.358	1213.6759	98	DDH
AUD1019	660482.4724	7273406.892	1213.6371	100	DDH
AUD1020	660482.3779	7273407.166	1213.8977	132.5	DDH
AUD0958	660508.0612	7273623.507	1164.8064	163	DDH
AUD0959	660507.8874	7273623.396	1164.9419	282	DDH
AUD0960	660507.7085	7273623.314	1164.8857	275.1	DDH
AUD0961	660507.2127	7273623.217	1164.8892	273.3	DDH
AUD0962	660507.0769	7273623.165	1164.9158	281	DDH
AUD0963	660507.8545	7273623.463	1164.7428	282	DDH
AUD0964	660507.2807	7273623.282	1164.7395	322	DDH
AUD0965	660506.9559	7273623.133	1164.913	321	DDH
AUD0966	660507.0784	7273623.325	1164.6239	313	DDH
AUD1000	659973.9002	7273610.254	1265.9894	130.15	DDH
AUD1001	660008.0181	7273603.502	1265.2872	117	DDH
AUD1002	660008.148	7273603.41	1265.2934	132	DDH
AUD1003	660008.073	7273603.438	1265.2853	143.8	DDH
AUD1004	660008.5687	7273604.059	1265.2951	107.1	DDH
AUD1005	660008.152	7273603.489	1265.2779	120	DDH
AUD1006	660067.2498	7273591.097	1264.0183	123	DDH
AUD1007	660067.5151	7273591.174	1264.0278	142	DDH
AUD1008	660067.4126	7273591.453	1264.0175	105	DDH
AUD1009	660067.703	7273591.159	1264.0133	117	DDH
AUD1010	660067.9892	7273591.167	1263.9988	135	DDH

HoleID	Easting (mE)	Northing (mN)	AbraMine_Elev (mRL)	Max_Depth (m)	Hole_Type
AUD1011	660067.9029	7273591.502	1264.0241	100	DDH
AUD1012A	660067.4407	7273591.18	1263.9876	111	DDH
AUD1021	660482.3549	7273406.929	1214.0822	139	DDH
AUD1022	660482.3987	7273406.852	1213.9939	141	DDH
AUD1023	660482.4419	7273406.601	1214.0629	150	DDH
AUD1024	660482.473	7273406.571	1213.7778	164.59	DDH
AUD1025	660482.3802	7273406.509	1214.0031	115	DDH
AUD1026	660487.8936	7273406.164	1213.7443	119.78	DDH
AUD1027	660488.23	7273406.322	1213.7203	95	DDH
AUD1028	660879.1952	7273556.042	1236.9965	76	DDH
AUD1031	660878.112	7273556.516	1237.372	123	DDH
AUD1032	660877.7525	7273556.221	1237.6908	132	DDH
AUD1033	660878.0662	7273556.52	1237.3638	135	DDH
AUD1036	660565.2621	7273645.394	1163.5145	195	DDH
AUD1037	660565.1852	7273645.379	1163.6213	186	DDH
AUD1039	660565.1224	7273645.41	1163.4467	180	DDH
AUD1041	660564.3246	7273645.031	1163.4024	180	DDH
AUD1046A	660134.358	7273577.344	1262.685	142	DDH
AUD1047	660134.156	7273577.44	1262.681	120	DDH
AUD1048	660134.157	7273577.44	1262.682	118	DDH
AUD1049	660133.643	7273577.323	1262.657	142	DDH
AUD1050	660133.65	7273577.424	1262.644	150	DDH
AUD1051	660134.131	7273577.045	1262.747	134	DDH
AUD1053A	660111.0475	7273581.164	1263.74	102	DDH
AUD1054	660111.0475	7273581.164	1263.7414	123	DDH
AUD1055	660070.8155	7273590.12	1264.016	121	DDH
AUD1056	660070.8155	7273590.12	1263.917	118	DDH
AUD1057	660070.8155	7273590.12	1264.07	130	DDH
AUD1058	660008.7148	7273603.265	1265.395	148	DDH
AUD1059	659973.7026	7273610.614	1265.359	123	DDH
AUD1060	659973.7026	7273610.614	1265.975	123	DDH
AUD1061	660008.7148	7273603.265	1266.59	160	DDH
AUD1062	659973.7026	7273610.614	1265.944	133	DDH
AUD1063	659973.7026	7273610.614	1265.922	151	DDH
AUD1064	660348.3489	7273468.84	1184.5662	45	DDH
AUD1066	660347.8	7273469.181	1183.7303	57	DDH
AUD1067	660347.4441	7273469.23	1183.7158	53.9	DDH
AUD1093	660564.909	7273604.875	1188.415	18	DDH
AUD1094	660565.524	7273604.696	1190.815	9	DDH
AUD1095	660563.499	7273608.903	1188.381	15	DDH
AUD1096	660563.546	7273610.481	1189.007	9	DDH
AUD1097	660574.291	7273610.958	1188.525	12	DDH
AUD1099	660575.512	7273607.819	1188.676	18	DDH